

Welcome to WebChat with Minnesota Adult Education!



- We'll begin at 1:00.
- Please stay muted to reduce background noise.
- If you are having any tech issues, please chat to Wendy Lindblom for assistance.

Check-In Discussion (introduce yourself and enter responses in the chat):

- **How is your program celebrating Adult Education and Family Literacy Week?**



Recording Today's Session

The recording will be posted on the Literacy Action Network website.



Welcome to WebChat with MNABE

Wednesday, September 18, 2024

Agenda

- Announcements
- 2023-24 Report Card
- Grants and Funding
- Transitions
- High School Equivalency Testing
- Professional Development
- Questions

A large stone monument stands against a cloudy sky. The monument features a red script of the word 'Minnesota' and the words 'Welcome You' in a bold, sans-serif font. A dark blue banner with white text is overlaid on the right side of the image.

Adult Education Team @ MDE

Brad Hasskamp, State Director

Astrid Liden, Professional Development

Brandy Logan, HSE & Accountability

Hailey Swanson, Grants, Records, and Admin Support

Jodi Versaw, Program Quality

Julie Dincau, Transitions

Neill Allard, Records, Communications, and Admin Support

Announcements

This week is National Adult Education and Family Literacy Week!

Please share your response in the chat:


Adult Education is ____ because _____.



Minnesota Adult Education is amazing because of you!

SEPTEMBER 16-20, 2024


ADULT EDUCATION & FAMILY LITERACY WEEK

 Minnesota Department of Education

1d · 🌐

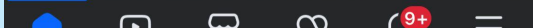
This week is National Adult Education and Family Literacy week! Adult Education and Family Literacy programs connect adults with classes in English Language learning, diploma, high school equivalency diploma preparation through GED or HiSET, college and career preparation, digital literacy skills and more. Learn about Minnesota's almost 300 program sites at <https://hotline.mnabe.org/> #AEFLWeek



 LaToya Newson, Ed.S. · 1st Director

6h · 🌐

Happy Adult Education and Family Literacy Week!!!! I want to take a moment to recognize the profound impact of this work. Adult education and family literacy are the cornerstones of economic mobility, personal growth, and community development! This week is a reflection of the transformative power of education, and I'm deeply grateful for all the instructors, local staff, administrators, state directors, advocates, AE champions, and students! #OCTAE #AEFLWEEK2024 #ADULTEducation

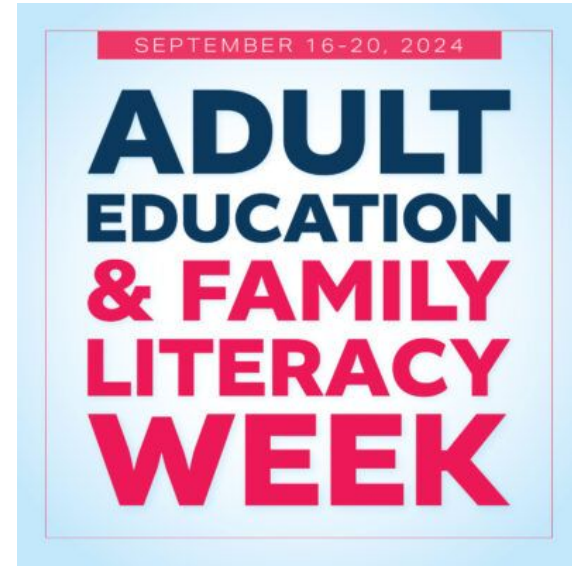


Adult Education & Family Literacy Week!

National Adult Education and Family Literacy (AEFL) week is from September 16th to the 20th, 2024.

Join us by raising more awareness of adult education and family literacy by amplifying our presence as one voice.

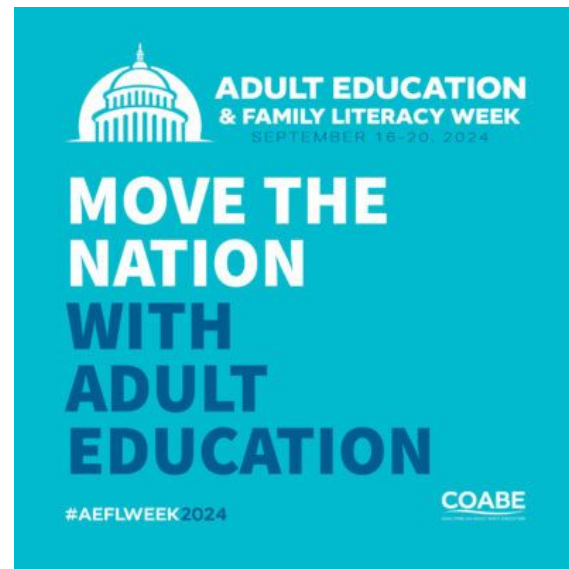
You should have received an email about the Call to Action!



Adult Education & Family Literacy Week!

Quick Easy Steps:

1. Download the [AEFL Toolkit](#) from LAN's website
 - Available under [Resources](#)
2. Upload **1 post per day** on your social media (beginning of the workday if possible)
 - Monday, September 16th – [Day 1 Image](#)
 - Tuesday, September 17th – [Day 2 Image](#)
 - Wednesday, September 18th – [Day 3 Image](#) ←today
 - Thursday, September 19th – [Day 4 Image](#)
 - Friday, September 20th – [Day 5 Image](#)
3. Use the hashtag **#AEFLMN**
4. Share, like or repost



Clarification: LAN or Literacy Minnesota?



- Summer Institute
- LAN Membership Renewals
- Legislative Advocacy for Adult Education
- Travel Reimbursement for Fall Manager Meeting

If you need to update your system with a new W9 for LAN, reach out to Wendy Lindblom at info@literacyactionnetwork.org.



- Adult Literacy Hotline
- Distance Learning (DL) training
- SiD and DL licenses
- Digital Literacy/Northstar courses, resources, and tests
- Volunteer referrals, training, and coordination

Classes on Election Day

Regularly scheduled Adult Education programming **can be held** on an election day (includes primary elections and special elections). Special or one-time events should not be held on election day.

- Adult Education programs fall under the "public school" section of the law due to our affiliation with Community Education.
- MN State Statute 204C.03 outlines events on general, primary and special election days.



Elections & Voting Resources



**Watch for a 3-part
newsletter article
series on elections &
voting in MN ABE
Connect in October!**

Two-part Webinar Series! Equipped for the Elections: Media Literacy and Voting

Election season is upon us! So much to talk about with students...but how exactly? Join this non-partisan, two-part webinar series hosted by World Education and the National Coalition for Literacy.

- Part 1: Building Media Literacy in an Election Year - September 20 at 12:00
- Part 2: Get Out the Adult Education Vote! - September 27 at 12:00

[Registration](#)

Media Literacy, Voting, and Advocacy

The Change Agent has [3](#)
[collections in PDF, audio, and](#)
[Google slides](#) in packet 33.



2023-24 Minnesota Adult Education Report Card

2024 MNABE Report Card 1

ABE Report Card for 2024 was sent September 4th (email from Astrid)

The first page provides descriptions of the tables and definitions

THIS REPORT REFLECTS RESULTS FOR THE PROGRAM YEAR JULY 1, 2023 - JUNE 30, 2024

In this program year, there were 39 ABE consortia in Minnesota
All 39 consortia had ABE-level participants
33 of 39 consortia had ESL-level participants

THIS REPORT CONTAINS THE FOLLOWING TABLES:

STATE AID PER PARTICIPANT

This table ranks consortia based on the amount of state ABE aid received per participant.
Note that this table reflects state aid for the fiscal year beginning July 1, 2024, which is based on contact hours generated from May 1, 2023 - April 30, 2024.

MEASURABLE SKILL GAINS FOR ABE-LEVEL PARTICIPANTS

This table ranks consortia based on the percentage of their ABE participants who made a level gain or achieved a high school credential.

MEASURABLE SKILL GAINS FOR ESL-LEVEL PARTICIPANTS

This table ranks consortia based on the percentage of their ESL participants who made a level gain or achieved a high school credential.

POST-TESTING RATES

This table ranks consortia based on the percentage of participants (ESL and ABE) who achieved 40+ hours of instruction and received a post-test.

RETENTION AND PERSISTENCE FOR ABE-LEVEL STUDENTS

This table ranks consortia based on the percentage of their ABE participants that reach 40 hours of instruction.

RETENTION AND PERSISTENCE FOR ESL-LEVEL STUDENTS

This table ranks consortia based on the percentage of their ESL participants that reach 40 hours of instruction.

DEFINITIONS:

Enrollee = any student who enters an ABE program, regardless of hours of attendance

Participant = an enrollee who attends 12+ hours

ABE-level student = a student whose pre-test places them into an ABE level

Note: Currently, students pre-tested with the TABE or CASAS GOALS are ABE students.

ESL-level student = a student whose pre-test places them into an ESL level

Note: Currently, students tested with CASAS Life and Work or CASAS STEPS are ESL students.

Measurable Skills Gain = Measurable Skills Gain refers to level gains, high school credential attainment and other MSGs specific to Integrated Education and Training and workplace literacy.

Level gain = Test-based method of achieving a Measurable Skill Gain, accomplished by achieving a post-test score that falls into a higher level than pre-test score

High school credential = GED, HiSET, Standard Adult High School Diploma, or a local diploma achieved through a credit completion diploma program

PY = program year (July 1 - June 30)

FY = fiscal year (July 1 - June 30)

MNABE Report Card 2

Minnesota ABE FY 2024-25 State Aid Per Participant

Consortium	FY2024-25 State Aid	State Aid Rank	Number of Participants (PY 23-24)	Number of Participants Rank	State Aid per Participant
Southwest Metro	\$ 1,143,496.07	14	429	18	\$ 2,665.49
Brainerd ABE	\$ 276,115.13	28	111	30	\$ 2,487.52
South Suburban ABE	\$ 398,287.50	25	162	27	\$ 2,458.56
Arrowhead Economic OA	\$ 731,182.50	19	317	21	\$ 2,306.57
Lakeville ABE	\$ 239,981.55	29	105	31	\$ 2,285.54
Duluth AE	\$ 462,583.91	24	213	25	\$ 2,171.76
Northwest Service Coop	\$ 610,065.00	22	300	23	\$ 2,033.55
Area Adult Learning Coop	\$ 342,593.46	26	171	26	\$ 2,003.47
Mankato	\$ 892,192.76	17	460	17	\$ 1,939.55
White Earth ABE	\$ 9,555.00	39	5	39	\$ 1,911.00
Central MN ABE	\$ 2,009,362.22	7	1112	10	\$ 1,806.98
Hiawatha Valley AE	\$ 166,080.00	33	92	34	\$ 1,805.22
Glacial Lakes ABE	\$ 618,435.37	21	344	20	\$ 1,797.78
Dakota Prairie ABE	\$ 166,282.50	32	98	32	\$ 1,696.76
Metro South ABE	\$ 2,489,644.29	6	1488	6	\$ 1,673.15
Minneapolis	\$ 5,714,575.57	2	3452	3	\$ 1,655.44
Metro North ABE	\$ 4,006,287.77	5	2431	5	\$ 1,648.00
Alexandria ABE	\$ 194,932.50	30	119	29	\$ 1,638.09
Great Rivers AE	\$ 671,143.17	20	425	19	\$ 1,579.16
Rochester ABE	\$ 1,873,843.94	8	1192	8	\$ 1,572.02
Statewide	\$ 52,384,765.31		33,993		\$ 1,541.68
Moorhead	\$ 484,873.85	23	315	22	\$ 1,539.28
Osseo ABE	\$ 1,538,630.84	11	1002	12	\$ 1,535.56
Metro East	\$ 4,539,364.01	4	2997	4	\$ 1,514.64
Southwest ABE	\$ 1,524,723.18	12	1007	11	\$ 1,514.12
ThinkSelf Deaf AE	\$ 79,496.59	35	54	37	\$ 1,472.16
Cass Lake-Bena	\$ 91,755.25	34	63	36	\$ 1,456.43
Robbinsdale	\$ 1,150,975.90	13	792	16	\$ 1,453.25
Southeast ABE	\$ 1,779,479.44	9	1286	7	\$ 1,383.73
Adult Options	\$ 1,561,671.73	10	1151	9	\$ 1,356.80
Corrections	\$ 4,943,594.58	3	3654	2	\$ 1,352.93
St. Paul CLC	\$ 8,189,723.68	1	6327	1	\$ 1,294.41
WEST ABE	\$ 985,877.31	16	808	15	\$ 1,220.15
Rosemount-AV-Eagan	\$ 1,141,129.97	15	947	14	\$ 1,204.99
Tri-Co Corrections	\$ 183,144.88	31	164	28	\$ 1,116.74
Lakes Area AE	\$ 283,411.31	27	258	24	\$ 1,098.49
American Indian OIC	\$ 79,309.40	36	95	33	\$ 834.84
Burnsville	\$ 733,618.47	18	961	13	\$ 763.39
Mille Lacs Band of Ojibwe	\$ 28,029.25	38	45	38	\$ 622.87
Red Lake	\$ 49,315.46	37	83	35	\$ 594.16

State Aid Per Participant

Lists each consortium's (grantee's) state ABE aid/funding, rank, number of participants and aid per participant

MNABE Report Card 3

Measurable Skill Gains (MSG) - ESL Participants

Lists each consortium's number of ESL-level participants, rank, and number and percent of participants with an MSG (level gain, diploma, or MSG 3/4/5)

Minnesota ABE PY 2024 Measurable Skill Gains - ESL Participants

Consortium	Number of Participants (ESL levels)	Number of Participants Rank	Number of Participants who made a Level Gain	Number of Participants who completed a HS Credential *	Number of Participants with Other MSG (3, 4, 5)	Percent of Participants with MSG **
Brainerd ABE	28	30	15	0	0	53.6%
Great Rivers AE	271	15	83	0	89	51.3%
SouthWest Metro	265	16	121	0	0	45.7%
Metro North ABE	1232	4	559	0	0	45.4%
Area Adult Learning Coop	147	21	56	0	5	40.1%
Osseo ABE	645	12	255	1	0	39.5%
Metro East	1485	3	575	9	0	39.0%
Arrowhead Economic OA	18	33	7	0	0	38.9%
Adult Options	897	6	343	0	0	38.2%
Central MN ABE	780	8	292	1	0	37.4%
Mankato	183	18	68	0	0	37.2%
Robbinsdale	468	14	172	0	0	36.8%
Lakeville ABE	50	28	18	0	0	36.0%
Rosemount-AV-Eagan	588	13	199	0	10	34.9%
Statewide ESL	18777	0	6059	34	136	32.8%
Glacial Lakes ABE	254	17	81	1	0	32.3%
Dakota Prairie ABE	88	26	28	0	0	31.8%
Hiawatha Valley AE	22	32	7	0	1	31.8%
Metro South ABE	1044	5	321	0	8	31.0%
Southeast ABE	648	11	194	5	12	30.9%
WEST ABE	175	19	54	0	0	30.9%
Burnsville	742	9	227	1	0	30.7%
Minneapolis	2668	2	815	4	0	30.6%
Corrections	105	23	32	0	0	30.5%
St. Paul CLC	4530	1	1353	11	9	30.1%
South Suburban ABE	96	25	28	0	0	29.2%
Northwest Service Coop	153	20	43	3	0	28.8%
Duluth AE	28	30	8	0	0	28.6%
Moorhead	145	22	41	0	0	28.3%
NRS Target						28.0%
Alexandria ABE/ESL	61	27	16	0	0	26.2%
Southwest ABE	782	7	193	0	0	24.7%
Rochester	688	10	167	0	2	24.4%
Lakes Area AE	99	24	24	0	0	24.2%
ThinkSelf Deaf AE	38	29	8	0	0	21.1%
Program Improvement						19.6%

Consortium	Number of Participants (ABE Levels)	Number of Participants Rank	Number of Participants who Made a Level Gain	Number of Participants who Completed a HS Credential *	Number of Participants with Other MSG (3, 4, 5)	Percent of Participants with MSG **
Mankato	277	15	41	17	96	52.0%
Brainerd ABE	83	28	22	21	0	49.4%
Tri-Co Corrections	164	21	80	6	0	48.8%
Adult Options	254	16	107	19	1	47.2%
Area Adult Learning Coop	24	36	4	8	0	45.8%
Rochester	504	8	132	61	59	45.6%
Alexandria ABE/ESL	58	33	11	18	0	44.8%
Cass Lake-Bena	63	32	14	18	0	44.4%
Hiawatha Valley AE	70	30	19	10	6	44.3%
Duluth AE	185	19	71	26	16	43.8%
White Earth	5	39	0	2	0	40.0%
Metro South ABE	444	9	144	22	17	39.6%
Lakeville ABE	55	34	16	5	0	38.2%
Southeast ABE	638	6	172	39	39	37.9%
SouthWest Metro	164	22	52	7	0	35.4%
Arrowhead Economic OA	299	14	92	17	0	34.4%
Glacial Lakes ABE	90	27	8	25	0	34.4%
Great Rivers AE	154	24	28	24	9	34.4%
Moorhead	170	20	37	25	0	32.4%
Northwest Service Coop	147	25	11	37	0	32.0%
South Suburban ABE	66	31	16	7	0	31.8%
Corrections	3549	1	860	342	69	31.8%
Burnsville	219	18	61	8	0	31.1%
Minneapolis	784	5	133	116	0	30.7%
Statewide ABE	15216	0	3465	1151	447	30.7%
Central MN ABE	332	12	67	39	0	30.1%
WEST ABE	633	7	184	4	0	29.5%
Osseo ABE	357	11	84	22	0	29.4%
Red Lake	83	29	10	15	0	28.9%
St. Paul CLC	1797	2	424	38	114	28.7%
American Indian OIC	95	26	21	6	0	28.4%
NRS Target						28.0%
Lakes Area AE	159	23	31	13	0	27.7%
Rosemount-AV-Eagan	359	10	72	17	15	26.2%
Robbinsdale	324	13	62	22	0	23.5%
Metro North ABE	1199	4	237	45	7	22.6%
Southwest ABE	225	17	39	8	0	20.9%
Metro East	1512	3	275	66	0	20.8%
Dakota Prairie ABE	10	38	1	1	0	20.0%
Program Improvement						19.6%

MNABE Report Card 4

Measurable Skill Gains (MSG) - ABE Participants

Lists each consortium's number of ABE-level participants, rank, and number and percent of participants with an MSG (level gain, diploma, or MSG 3/4/5)

MNABE Report Card 5

Post-Testing Rates

Lists each consortium's number of participants, percent of participants with 12+ hours that had a post-test, number with 40+ hours, and percent of participants with 40+ hours that had a post-test

Minnesota ABE PY 2024 Post-testing Rates

ABE-Level and ESL-Level Participants (12+ hours)

Consortium	Number of Participants	Percent of Participants w/ 12+ Hours Post-Tested	Number of 40+ Hour Participants	Percent of Participants w/ 40+ Hours Post-Tested
Lakeville ABE	105	64.8%	68	91.2%
Brainerd ABE	111	53.2%	67	86.6%
Central MN ABE	1112	56.2%	698	85.0%
SouthWest Metro	429	67.8%	341	82.7%
Dakota Prairie ABE	98	48.0%	52	82.7%
Southeast ABE	1286	55.3%	797	81.8%
Arrowhead Economic OA	317	45.4%	163	81.6%
South Suburban ABE	162	57.4%	105	81.0%
Area Adult Learning Coop	171	55.6%	86	80.2%
Metro North ABE	2431	57.7%	1654	78.7%
Alexandria ABE/ESL	119	41.2%	46	78.3%
Burnsville	961	53.1%	621	77.5%
American Indian OIC	95	45.3%	50	76.0%
Duluth AE	213	53.5%	147	75.5%
Hiawatha Valley AE	92	46.7%	53	75.5%
Tri-Co Corrections	164	49.4%	101	75.2%
Moorhead	315	39.7%	149	75.2%
Rosemount-AV-Eagan	947	51.5%	586	74.9%
WEST ABE	808	36.1%	324	74.7%
Metro East	2997	49.8%	1678	74.5%
Statewide ESL	18777	52.1%	12504	74.3%
Great Rivers AE	425	51.8%	226	73.9%
Osseo ABE	1002	55.6%	711	73.6%
Robbinsdale	792	50.0%	524	71.9%
Minneapolis	3452	53.1%	2394	71.4%
St. Paul CLC	6327	50.5%	4130	70.8%
Southwest ABE	1007	40.9%	513	70.2%
Metro South ABE	1488	55.0%	1100	69.9%
Statewide ABE	15216	45.2%	9230	68.9%
Rochester	1192	48.2%	789	68.8%
Red Lake	83	20.5%	19	68.4%
Adult Options	1151	53.3%	862	67.4%
Lakes Area AE	258	29.1%	95	66.3%
Glacial Lakes ABE	344	41.9%	199	65.3%
Mankato	460	47.0%	303	65.0%
Corrections	3654	42.0%	2239	64.4%
ThinkSelf Deaf AE	54	55.6%	47	61.7%
Program Improvement Benchmark				60.0%

Minnesota ABE PY 2024 Retention and Persistence By Consortium - ABE Students

Consortium	Number of Enrollees (ABE Students)	Percent of Enrollees Retained to 12 Hours	Percent of Enrollees Retained to 40 Hours	Number of Participants (ABE Students)	Average Participant Hours	Percent of Participants Retained to 40 Hours
ThinkSelf Deaf AE	19	84.2%	73.7%	16	139.06	87.5%
SouthWest Metro	272	60.3%	46.7%	164	118.58	77.4%
Metro South ABE	661	67.2%	50.7%	444	131.02	75.5%
St. Paul CLC	2687	66.9%	49.6%	1797	132.66	74.2%
Minneapolis	1260	62.2%	45.8%	784	123.38	73.6%
Adult Options	305	83.3%	59.0%	254	112.27	70.9%
Southeast ABE	929	68.7%	47.9%	638	83.70	69.7%
Duluth AE	483	38.3%	26.1%	185	77.75	68.1%
Rochester	768	65.6%	44.5%	504	134.18	67.9%
Lakeville ABE	84	65.5%	44.0%	55	84.33	67.3%
Burnsville	374	58.6%	39.0%	219	131.18	66.7%
Osseo ABE	481	74.2%	48.2%	357	100.93	65.0%
Metro North ABE	1757	68.2%	42.5%	1199	111.65	62.3%
Tri-Co Corrections	265	61.9%	38.1%	164	173.98	61.6%
Statewide ABE	22768	66.8%	40.5%	15216	108.45	60.7%
Robbinsdale	457	70.9%	42.9%	324	93.51	60.5%
Rosemount-AV-Eagan	554	64.8%	39.2%	359	102.49	60.4%
Corrections	4676	75.9%	45.9%	3549	129.74	60.4%
Dakota Prairie ABE	15	66.7%	40.0%	10	46.35	60.0%
South Suburban ABE	100	66.0%	39.0%	66	75.29	59.1%
Mankato	396	69.9%	41.2%	277	97.57	58.8%
Hiawatha Valley AE	115	60.9%	35.7%	70	47.90	58.6%
Brainerd ABE	147	56.5%	30.6%	83	63.89	54.2%
Central MN ABE	578	57.4%	30.3%	332	61.02	52.7%
American Indian OIC	142	66.9%	35.2%	95	73.14	52.6%
Arrowhead Economic OA	430	69.5%	35.6%	299	72.92	51.2%
Area Adult Learning Coop	45	53.3%	24.4%	24	56.66	45.8%
Metro East	2394	63.2%	28.7%	1512	85.05	45.4%
Cass Lake-Bena	129	48.8%	21.7%	63	89.92	44.4%
Southwest ABE	434	51.8%	22.8%	225	53.72	44.0%
Glacial Lakes ABE	273	33.0%	13.2%	90	49.92	40.0%
Great Rivers AE	336	45.8%	18.2%	154	59.86	39.6%
Moorhead	263	64.6%	25.5%	170	51.58	39.4%
Lakes Area AE	285	55.8%	21.4%	159	58.11	38.4%
Mille Lacs Band of Ojibwe	123	36.6%	13.8%	45	46.44	37.8%
Northwest Service Coop	301	48.8%	17.9%	147	49.40	36.7%
WEST ABE	1277	49.6%	17.9%	633	43.66	36.0%
Alexandria ABE/ESL	109	53.2%	17.4%	58	42.28	32.8%
Red Lake	183	45.4%	10.4%	83	33.99	22.9%
White Earth	41	12.2%	0.0%	5	15.15	0.0%

MNABE Report Card 6

Retention and Persistence - ABE Participants

Lists each consortium’s number of ABE-level enrollees, percent of enrollees with 12+ hours, 40+ hours, number of participants, average participant hours, and percent of participants retained to 40+ hours

MNABE Report Card 7

Retention and Persistence - ESL Participants

Lists each consortium's number of ESL-level enrollees, percent of enrollees with 12+ hours, 40+ hours, number of participants, average participant hours, and percent of participants retained to 40+ hours

Minnesota ABE PY 2024 Retention and Persistence By Consortium - ESL Students

Consortium	Number of Enrollees (ESL Students)	Percent of Enrollees Retained to 12 Hours	Percent of Enrollees Retained to 40 Hours	Number of Participants (ESL Students)	Average Participant Hours	Percent of Participants Retained to 40 Hours
Corrections	110	95.5%	86.4%	105	305.20	90.5%
ThinkSelf Deaf AE	41	92.7%	80.5%	38	161.99	86.8%
SouthWest Metro	417	63.5%	51.3%	265	135.52	80.8%
Brainerd ABE	33	84.8%	66.7%	28	126.01	78.6%
Mankato	249	73.5%	56.2%	183	194.91	76.5%
Adult Options	1061	84.5%	64.3%	897	121.78	76.0%
Duluth AE	37	75.7%	56.8%	28	77.31	75.0%
Osseo ABE	836	77.2%	57.3%	645	130.60	74.3%
Metro North ABE	2128	57.9%	42.6%	1232	143.74	73.6%
Metro South ABE	1435	72.8%	53.3%	1044	118.25	73.3%
Robbinsdale	669	70.0%	49.0%	468	118.59	70.1%
South Suburban ABE	130	73.8%	50.8%	96	84.40	68.8%
Minneapolis	4295	62.1%	42.3%	2668	130.44	68.1%
Central MN ABE	1183	65.9%	44.2%	780	97.69	67.1%
Metro East	2157	68.8%	46.0%	1485	125.62	66.8%
Statewide ESL	27331	68.7%	45.8%	18777	115.58	66.6%
Rochester	1021	67.4%	43.8%	688	108.26	65.0%
Glacial Lakes ABE	456	55.7%	35.7%	254	99.71	64.2%
Burnsville	1125	66.0%	42.2%	742	96.70	64.0%
Rosemount-AV-Eagan	903	65.1%	40.9%	588	84.68	62.8%
Lakeville ABE	68	73.5%	45.6%	50	86.49	62.0%
St. Paul CLC	6991	64.8%	40.0%	4530	105.68	61.7%
Great Rivers AE	371	73.0%	44.5%	271	73.01	60.9%
Northwest Service Coop	215	71.2%	41.9%	153	84.97	58.8%
Moorhead	187	77.5%	43.9%	145	70.36	56.6%
Arrowhead Economic OA	31	58.1%	32.3%	18	84.69	55.6%
WEST ABE	242	72.3%	39.7%	175	57.42	54.9%
Hiawatha Valley AE	37	59.5%	32.4%	22	68.59	54.5%
Southeast ABE	883	73.4%	39.9%	648	80.35	54.3%
Southwest ABE	1184	66.0%	35.0%	782	65.21	52.9%
Dakota Prairie ABE	117	75.2%	39.3%	88	55.25	52.3%
Area Adult Learning Coop	210	70.0%	35.7%	147	64.67	51.0%
Alexandria ABE/ESL	121	50.4%	22.3%	61	52.08	44.3%
Lakes Area AE	186	53.2%	18.3%	99	60.55	34.3%

Targets and Program Improvement Benchmarks

Program Improvement is a state-required process for consortia whose measurable skills gains (MSGs) fall 30% under the state target

- 2023-24 MSG target was 28%
 - Benchmark for Program Improvement was 19.6% (or below)
- 2024-25 MSG target is 36.7%
 - Benchmark for Program Improvement is 25.69% (or below)



2024 Program Improvement Process



Programs that have been identified for program improvement have been notified and will receive additional communication from Astrid Liden in the next couple of weeks.

Program Improvement Process in the Future

While there will not be an extensive cohort-based program improvement process this year, we may return to that model in future years.



Grants and Finance

Grants and Finance: Common Terms

Fiscal year (FY): July 1 - June 30

FY24: July 1, 2023 - June 30, 2024 ← *Ended in June*

FY25: July 1, 2024 - June 30, 2025 ← *Current year*

UFARS: Codes for fiscal reporting that must be used by grantees. Examples:

FIN 322: State Adult Education/ABE Funds

FIN 438: Federal Adult Education/ABE Funds

FIN 801: IELCE Funds

Fall 2024: Key Finance Tasks - FY24 funds

Finance tasks for FY24 funds:

- **Optional** Carry over any unused FY24 State ABE funds (FIN 322).
- Draw down all FY24 Federal ABE funds (FIN 438) in SERVS.
- Submit FY24 Final Fiscal Completion Report by Dec 15.

Fall 2024: Key Finance Tasks - FY25 funds

Finance tasks for FY25 funds:

- Create budget for FY25 Federal ABE funds (FIN 438) in MEGS.
 - Sept 18: in final software development stages
 - MDE will email grantees when the budget is available in MEGS
- Submit reimbursement requests for FIN 438 funds quarterly in MEGS.

 New

Key Finance Task: Carryover FY24 state ABE funds (FIN 322)

Up to 20% of state funds can be used between July 1 and Sept 30 of the following fiscal year (“Quarter 5”).

When carrying over funds in this way, be sure they are course coded correctly with UFARS codes.

The course code for FY24 funds is 004. This code should be used for expenses that occurred between July 1 and September 30, 2024 but are being charged to FY24 funding.



UFARS course codes for carryover

Course codes to use for carryover (FIN 322)

FY24 = 004

FY25 = 005

FY26 = 006

etc.



Key Finance Task: Draw down FY24 federal funds (FIN 438) in SERVS

Federal funds (unlike state funds) cannot be used after June 30 of the fiscal year they are awarded.

Work with your business office to draw down FY24 federal funds from SERVS.

If necessary, revise budget to match expenses.

Do this ASAP, but no later than Sept 30.



Key Finance Task: FY24 Final Fiscal Completion Reports



Mid-October: FY24 Final Fiscal Completion Reports will be emailed to fiscal agent contact (by Hailey Swanson)

****Districts** complete audits of ALL education funding by Dec 1**

Dec 13: FY24 Final Fiscal Completion Reports due back to our office (email to Hailey)

Example Final Fiscal Completion Report

	A	B	C	D	E	F	G
FY 2023 Adult Basic Education Annual Final Fiscal Completion Report - FIN 322 and FIN 438							
General Information:		Expenditures for ABE consortia authorized under Minnesota Statutes 124D.531 and _____, 2023					
Fiscal Agent:						FY 23 State Entitlement:	
						FY 23 Federal Entitlement:	
A					E	F	G
UFARS Object Code	Expenditure	FIN 438 Federal Expenditures	FIN 322 State Aid Expenditures		Maximum State Admin Allowed	Course Code 002 Expenditures 7/1-9/30/22 <u>Claimed</u> against FY22 revenue	Course Code 003- Expenditures 7/1-9/30/23 using FY23 revenue -max allowed 20% of amount in cell G6
110	Administration (Max = 5% of award)				\$0.00	\$0.00	
120	ABE Program Management/Supervision					If there is a dollar amount in Column F, Row 11, that means expenditures were claimed between 7/1/22 - 9/30/22 against your FY22 revenue. The dollar	
All Other 100's	ABE Counseling, Instructional, Clerical						
200's	ABE Employee Benefits						
303	Federal Subawards and Subcontracts (amount up to \$25,000)						
	Federal Subawards and Subcontracts (excess						



For FY25 - Minnesota Education Grant System (MEGS)

SERVS is being replaced by MEGS.

Changes (starting with FY25):

- Applications for State and Federal Adult Education funds submitted in MEGS.
- Federal Adult Education funds (FIN 438) will be distributed in MEGS, not in SERVS.

Not changing:

- State Adult Education funds (FIN 322) will continue to flow through IDEAS.

Key Finance Task: Create Budget for FY25 Federal Funds in MEGS



Watch for email from our team to let you know when MEGS budget is available.

More information on MEGS budgets and reimbursement requests

Our team will provide additional technical assistance on budgets and reimbursements requests as we have more information available!



COMING SOON

Integrated English Literacy and Civics Education (IELCE) Grants

- Metro North ABE
- Metro South ABE
- Hmong Cultural Center
- Adult Options in Education
- International Institute
- Mankato ABE
- Neighborhood House
- Owatonna ABE
- Saint Paul Public Schools
- Great Rivers ABE
- Literacy Minnesota
- **Hiawatha Valley ABE**

Integrated English Literacy and Civics Education (IELCE) Grantee Reminder

The first quarter of the 2024-25 grant cycle will end September 30, 2024.

The Financial Reporting Form (FRF) summarizing grant expenditures is due October 15, 2024 for activities occurring for the grant period of July 1, 2024 to September 30, 2024.

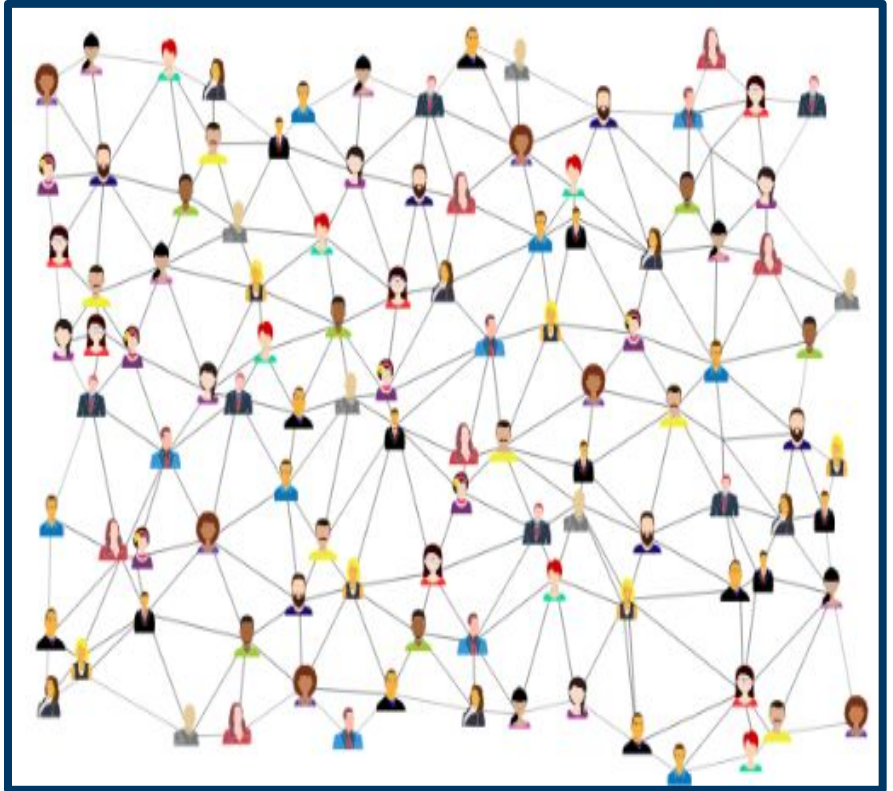
Please contact Nyagatare Valens with questions
Nyagatare.Valens@state.mn.us.

Transitions

Online Statewide Training Courses Pilot

Classes will be open to all ABE learners who are at the appropriate level for the course.

The referring consortium can count the contact hours.



Online Statewide Training Courses

[Link to document for more information](#)

Course Title	Consortium
Microsoft Office Specialist (MOS) Course	Metro East ABE
Paraprofessional Preparation Course	Metro East ABE
Test of Essential Academic Skills (TEAS) Preparation Course	Saint Paul Community Literacy Consortium
Commercial Driver's License (CDL)	Metro South ABE
Personal Care Assistant (PCA)	Metro South ABE

New IET process and forms!

Please use the [new process and forms](#) when submitting for Integrated Education and Training (IET) approval.



Minnesota Placement Practices Feasibility Study

- Legislatively mandated
- Purpose is to assess current admissions as well as developmental education placement
- Report findings to the MN State legislature in January of 2025



Minnesota Placement Study

Looking for
**Small Group
Virtual
Discussion
Participants**
to join our team!

Compensation & Benefits

- \$200 check
- Gain/deepen public speaking skills
- Network with other student leaders
- Provide input that could impact the lives of future students

Questions? Email

hmcnama@wested.org

[Promotional Flyer for learners.](#)

Requirements for Small Group Discussion

- Available in early October for a 90-minute virtual discussion
- Currently enrolled as a student at a college or university in Minnesota
- Was enrolled in one or more developmental courses, corequities, and/or ESL programs at the college/ university level in spring 23-spring 24
- Access to a computer and a quiet space for a virtual meeting
- Internet connection that can support Zoom video meetings
- Being multilingual is preferred, but not required

If you know of any ABE learners who meet the requirements for the focus group please have them apply at tinyurl.com/MPSdiscussion.

Next Generation Nursing Assistant: Train. Test. Work.

- Test Prep and 1 Test for ABE students.
- Please note the change for this round: the promo code is available **until June 15th, 2025**, or until funds run out, whichever comes first. Students receive the code after they complete the test prep.
- Students are encouraged to test as soon as possible to secure their spot!

Check out the [FAQ: Nursing Assistant State Exam Funding For ABE Students.](#)

High School Equivalency (HSE) Testing

New Age Waiver

THEN



GED Testing
Minnesota Department of Education
1500 Highway 36 West
Roseville, MN 55113-4266

General Educational Development
(GED®) Tests Age Waiver Application

ED-00833-12

General Information: Minnesota Statutes, section 124D.549 provides for the waiver of the minimum age requirement for all GED candidates under the age of 19 to take the GED Test on the basis of supportive evidence of special need provided by a recognized agency. Please refer to application instructions on page two.

NOW



HSE Testing
Minnesota Department of Education
400 NE Stinson Blvd.
Minneapolis, MN 55413

High School Equivalency (HSE) Tests Age
Waiver Application

ED-00833-12

General Information: HSE tests approved by the Minnesota Department of Education are the **General Educational Development (GED) Tests** and the **High School Equivalency Test (HiSET)**. Minnesota Statute 124D.549 allows for individuals age 17–18 to take an HSE Test if they have an approved waiver based on supportive evidence documenting a special need provided by a recognized agency. Please refer to application instructions on pages 2–4.

New Age Waiver (part 2)

Conditions for Waiver Approval *(to be completed by the Agency/Institution person)*

NOW

I am requesting an age waiver because (**check one only**):

- A:** I have been dropped from my school's attendance rolls for at least one full calendar year.
- B:** My high school class has graduated.
- C:** An employer indicated on signed/dated letterhead that I must earn an HSE diploma to qualify for employment.
- D:** A postsecondary institution or financial aid office indicated on signed/dated letterhead that I must earn an HSE diploma to qualify for acceptance or to begin the financial aid process.
- E:** The military indicated on signed/dated letterhead that I must earn an HSE diploma to qualify for acceptance.
- F:** An Adult Basic Education (ABE) program or other HSE trained and recognized educational, social service, or correctional agency indicated that successful completion of an HSE Test Battery is a part of my written individual learning plan, AND provided signed/dated documentation showing I have, under the supervision of a trained proctor, earned a minimum score on both an approved reading and math test:
 - Reading:** Earned at least a 145 on the GED Ready® RLA subtest; at least an 18 on the HiSET Official Practice Test (OPT11) Reading subtest; at least a 617 on the Reading TABE 11/12 (Form A); or at least a 249 on the CASAS GOALS Reading; and
 - Math:** Earned at least a 145 on the GED Ready® Math subtest; at least a 10 on the HiSET Official Practice Test (OPT11) Math subtest; at least a 617 on the Math TABE 11/12 (Form A); or at least a 231 on the CASAS GOALS Math.

New Age Waiver (part 3)

How do I select an appropriate “agency person” and/or age waiver condition?

1. Condition for waiver	2. Agency/Institution person	3. Supporting documentation required
<p>A: I have been dropped from my school’s attendance rolls for at least one full calendar year.</p> <p>NOTE: In Minnesota, a student cannot legally be dropped from all school enrollment until age 17. Alternative schools and homeschools count as being enrolled in</p>	<p>An official from the last school you attended</p> <p>OR</p> <p>Adult Education program staff (with official drop</p>	<p>If working with a local adult education program, your official drop letter from your former school</p>

Retake change:

- Before: 3 retakes at reduced priced
- Now: 2 retakes at reduced price, then 3rd at full price

GED and Me (Mobile app)



HiSET Updates

Computer-Based Test Fee	\$28.00	Per subtest (includes admin fee) at a test center
Computer-Based Test Fee	\$140.00	Per full battery (includes admin fee) at a test center
Online Proctored Test Fee	\$35.50	Per subtest (includes admin fee) at home
Online Proctored Test Fee	\$177.50	Per full battery (includes admin fee) at home
Paper-Based Test Fee	\$28.00	Per subtest (includes admin fee) at a test center
Paper-Based Test Fee	\$140.00	Per full battery (includes admin fee) at a test center
Admin Fee (supports test centers and/or online proctors)	\$10.00	Per subtest (initial test or retest)
Retest Fee	\$10.00	Admin Fee



DOC onboarding HiSET at all locations! New Locations Coming Soon

PSI centers in the state:

Rochester

Woodbury

Brainerd

St Paul

Blaine

Duluth

Willmar

Mankato

Eagan

HSE Coffee Talk Series

Last Thursday of Each Month (skipping December)

Sep 24, 2024	01:30 PM
Oct 22, 2024	01:30 PM
Nov 26, 2024	01:30 PM

Collaborate with other programs, Test Administrators (TAs), best tips, practices, and concerns

[Register here](#)

Professional Development

Professional Development Catalog

The online Minnesota Adult Education PD Catalog provides an overview of all MN Adult Ed professional development (PD) activities in one convenient, searchable place. Here you will find brief descriptions of all PD offerings currently provided by the [Minnesota Adult Education Support Network](#).

Note: Not all activities listed here have been scheduled yet, and many can be provided to you by request. Others are available on an ongoing basis.

- Scheduled activities are linked to the MN Adult Ed [Events Calendar](#) or other sites, where you can find registration and more details.
- For a list of upcoming PD activities for the year, see [FY25 MN Adult Ed PD Dates](#).

REFINE YOUR SEARCH

All Content Areas

All Formats

All Audiences

All Providers

Search by Keywords

Submit

Webinar/Webcast

ABE Foundations at a Distance: Webinar Series

ATLAS

ATLAS offers 3 live webinars to supplement the ABE Foundations Online Course and support new ABE staff members' entry into the field. The purpose of the webinar series is to: Provide a guided, connected way to complete the ABE Foundations online course content in... [Read More](#)

CONTENT AREAS: ABE Policy | ACES / Transitions | CCR Standards | Civics & Citizenship | Digital Literacy | Northstar | HSE / GED / Adult Diploma | Program Management | SID Database | Support Services | Using Volunteers

AUDIENCES: Administrator | Instructor | Support Staff



ABE Teaching & Learning Advancement System

HAMLINE UNIVERSITY

Plan your PD for the upcoming year with these MN Adult Ed resources!

[PD Catalog](#): Brief descriptions of all PD offerings on a searchable website

[FY25 PD Dates](#):

An overview of all PD events that have been planned to date (linked on PD Catalog)

[Events Calendar](#): Register for PD activities that have been scheduled

[ATLAS Ongoing & Future PD Opportunities](#)

Online Canvas Courses: Foundations

- ❖ [ABE Foundations](#)
- ❖ [ACES Foundations](#)
- ❖ [CCRS Foundations](#)
- ❖ [Northstar Foundations](#)



ABE and ACES Foundations Webinar Series

ABE Foundations Webinar Series

October 1, 8, & 22, 2024

2:00-3:30 pm



*A supported way to complete the **ABE Foundations online course** and meet fellow new ABE practitioners as well as key leaders in the field.*

ACES Foundations Webinar Series

Nov. 12, 26, Dec. 10, 2024

2:00-3:30 pm



*Join others live as you work your way through the **ACES Foundations online course** and deepen your understanding of the Transition Integration Framework.*

NEW! Teaching Reading to Adults Course

The free online [Teaching Reading to Adults self-paced course](#) focuses on:

- components of evidence-based reading instruction (EBRI)
 - how to assess adult learners in each of the 4 essential components of reading
 - strategies for teaching EBRI
-
- Intended for both new and experienced ABE administrators, teachers, support staff, and volunteers
 - Earn 16 CEUs upon completion!



AI Playgroup

Curious about AI (artificial intelligence) tools like ChatGPT and their implications for your teaching practice? **Meet up with ABE colleagues on Tuesday, September 24 to talk about and play with AI.** For this first meeting, we'll look at **MagicSchool** and experiment with some of its newer features. No prior knowledge or experience required! [Register for the series](#) and then join on any or all of the dates that work for you.

Meeting dates:

Fourth Tuesdays (9/24, 10/22, 11/26), 1:30-2:30 PM



Credential Specialist Webinar

Friday, September 27, 10:00-11:30

Community Interpreter, Food Protection Manager and **Certified Nursing Assistant** are some of the most common and most commonly asked about credential courses happening in ABE.

[Attend this webinar](#) to hear from experienced Credential Specialists about what requirements are suggested for potential participants, how the testing works, student success stories and a chance to ask questions.



North Regional - Oct. 3-4 in Walker

**Register by this Friday,
Sept. 20 to secure a
hotel room!**

**Thursday afternoon (1:30-4:30) =
Building Your Digital Literacy
Toolbox**

Other conference topics include:

- Becoming an ABE Advocate
- De-escalation Techniques for Student Behavior Problems
- Best Practices for Online or HyFlex
- Save Time with AI: MagicSchool for Teachers
- Enhancing Student Retention and Persistence
- Administrator Networking
- Coherence in the One-Room Schoolhouse Math Classroom
- Academic Vocabulary Instruction
- Distance Learning for English Language Learners
- Intake and Orientation Practices
- Adult Diploma

CCRS Refresher Webinar

October 14

2:00-4:00pm

Register [here](#).

There will be facilitated ELA & math breakout groups.



- Do I remember the **math shifts** and the **standards for mathematical practice** and the difference between them?
- Do I remember what the **three aspects of Rigor** are and why they are important?
- Do I remember how to measure **text complexity**, both qualitatively and quantitatively?
- Do I remember the **progression of text dependent questions** that is outlined by Fisher and Frey?

Best Practices in Digital Education Cohort

Kickoff is November 1, 2024; Goes through early March 2025.

[Apply online here by October 18, 2024.](#)

- Formerly known as Distance Learning 101/102
- For teachers, support staff, and administrators; open to individuals or program teams
- Topics include asynchronous and synchronous online learning, digital equity, digital navigation, instruction, assessment
- Canvas online course & 4 webinars; 20+ hours over 4 months
- CEUs and \$250 stipends available for those who fully complete
- Facilitated by Adam Kieffer (St. Paul ABE/Hubbs Center) and Elizabeth Bennett (Literacy MN)
- Direct questions to Adam Kieffer, hubbsadam@gmail.com



One-room Schoolhouse Community of Practice

Open to all who work in drop-in, lab or significantly multi-level settings.

Let's come together to share successes, challenges, and strategies!

Meeting dates:

Thurs., Dec. 5, 2:00-3:15

Wed., Jan. 15, 12:30-1:45

Friday, Feb. 28, 1:30-2:45

[Register](#) for the series



Mark your calendars! 2024-25 PD Event Dates

Fall North Regional (Walker) - Oct. 3-4, 2024

Fall Manager Meeting (Metro area, TBD) - Oct. 30, 2024

Math Institute (virtual) – Nov. 8, 2024

Support Services Conference (virtual) – Nov. 14-15, 2024

MN English Learner Conference (MELED) (St. Paul) – Nov. 22-23, 2024

Volunteer Management Conference (virtual) - Dec. 13, 2024

Language & Literacy Institute (Bloomington) - Jan. 23-24, 2025

Spring Statewide Virtual Conference – April 11, 2025

MCTM Spring Conference (Duluth) - April 24-25, 2025

Spring South Regional (Mankato) - May 2, 2025



Fall Manager Meeting - In Person!

Fall Manager Meeting

Wednesday, October 30

**9:00-3:00, with optional
networking before & after**

Best Western Plus in Shoreview

**Registration opens in early
October!**



*Please help us refine the agenda!
Share your input via the [Fall Manager Meeting Input survey](#) by the end of the day Monday, September 23.*



Materials

The recording and slides will be posted on the [Literacy Action Network website.](#)



Next WebChat

Wednesday, February 12

1-2:30pm

[Registration](#)



Thank You!

mde.abe@state.mn.us

Questions?

Neill Allard (*Neill.allard@state.mn.us*)

Julie Dincau (*Julie.dincau@state.mn.us*)

Brad Hasskamp (*Brad.hasskamp@state.mn.us*)

Astrid Liden (*Astrid.liden@state.mn.us*)

Brandy Logan (*Brandy.logan@state.mn.us*)

Hailey Swanson (*Hailey.swanson@state.mn.us*)

Jodi Versaw (*Jodi.versaw@state.mn.us*)