

# Welcome to WebChat with Minnesota Adult Education!



- We'll begin at 1:00.
- Please stay muted to reduce background noise.
- If you are having any tech issues, please chat to Wendy Her for assistance.

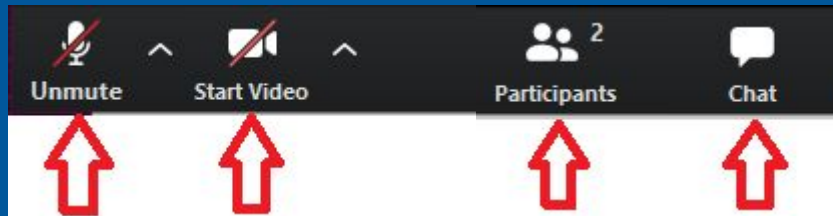
**Check-In Discussion (introduce yourself, your program, and enter responses in the chat):**

- **What successes have you and/or your program had recently?**

# For today's WebChat session

---

- For tech help, chat to Wendy Her
- Use your first & last name - just like a name tag! Feel free to add your pronouns.
- Bottom of screen: hover your mouse to reveal toolbar



Keep mic and video off  
(looks like this - red line)

Open Chat box  
& keep it open





# Recording Today's Session

The recording will be posted on the Literacy Action Network website.



# WebChat with Minnesota Adult Education

Wednesday, February 1, 2023



# Agenda

1. Welcome and Introductions
2. Announcements
3. Accountability
4. Assessment
5. Grants and Funding
6. Transitions
7. High School Equivalency
8. Professional Development
9. Questions



A large stone monument shaped like the state of Minnesota. The word "Minnesota" is written in a red, cursive script across the middle. Below it, the words "Welcome You" are carved in a dark, sans-serif font. The monument is set against a blue sky with white clouds.

# Adult Education Team @ MDE

**Brad Hasskamp**, State Director

**Jodi Versaw**, Program Quality

**Julie Dincau**, Transitions

**Astrid Liden**, Professional Development

**Brandy Logan**, HSE & Accountability

**Neill Allard**, Records, Communications, and  
Admin Support

# Announcements

**Programs and Services**

CareerForce  
Disability Determination Services  
Dislocated Worker Program  
Employment and Training Programs  
Energy Transition Office  
Governor's Committee on the Safety,  
Health, and Wellbeing of Agricultural and  
Food Processing Workers  
Governor's Council on Economic Expansion

## Digital Inclusion



Connecting All Minnesotans

To ensure all Minnesotans can connect, Minnesota must address internet service affordability, device access, and digital skills. These three "digital inclusion" facets work together to build a "digitally equitable" Minnesota in which "all individuals and communities have the information technology capacity needed for full participation in our society, democracy, and economy" (National Digital Inclusion Alliance).

More information: <https://mn.gov/deed/programs-services/broadband/adoption/>



# State Digital Equity Planning: Be Part of the Planning Process!

**Minnesotans can help shape the state's digital equity plan in three different ways:**

1. Establish a Digital Connection Committee and register it with the Office of Broadband Development (OBD) by March 15, 2023
  - Many committees will be eligible to apply for a non-competitive Assessing Digital Inclusion Mini-Grant of up to \$4,000. Mini-grant applications are due March 1
2. Provide OBD with feedback on a draft Digital Equity Plan from late August through late September
3. Find a committee near you and ask them how you might be involved

**More info:** <https://mn.gov/deed/programs-services/broadband/adoption/>

# Accountability

# IET Classes in SiD

ONLY those classes that are part of an IET approved by MDE can be checked as IET in SiD

Request:

- Run the desk audit report to see what classes are labeled IET (3rd page)
  - Uncheck “IET” for any classes that are not an MDE-approved IET
  - If you do have MDE-approved IET that are not appearing on the report, mark the class as “IET”

Links:

- SiD help desk article:  
<https://mnabe.zendesk.com/hc/en-us/articles/360038793091-Create-manage-Integrated-Education-Training-IET-class>
- IET Approval Form and Instructions: <http://www.mnabe.org/career-pathways/iet>

# SiD Desk Audit: Checking for IETs

Desk Audit Data Check: 7/1/2022 - 6/30/2023

3 of 3 Pages

- All Enrollees

All SubSites

## Page 3

*Note: the tables below will not show classes from ~~supersite~~. Instead, run each site separately.*

Confirm that Integrated Education & Training (IET) or IELCE classes appear correctly. Look for classes that are missing or are labeled incorrectly. Make changes on the class setup screen. See [this](#) help article for IET class requirements.


Classes Labelled "IET"	ID	Start Date	End Date
IET HOP Spring: Environmental Service Aide (Miller)	66254	04/10/23	05/10/23
IET HOP Winter: Boiler Operator License (Thiemman)	66297	01/30/23	03/27/23
IET HOP Spring: Community Interpreter Training _ Hybrid (Panou Xiong & TBD)	66298	03/06/23	05/24/23
IET/IEL HOP Spring: NAHA_Clinicals_In-Person	66300	03/16/23	05/25/23
IET HOP Spring: NAHA_Nursing Assistant Health Aide ONLINE	66301	03/16/23	05/25/23

Classes w/ Funding Source "IELCE"	ID	Start Date	End Date
HOP Winter: Medical Terminology (McLean)	66252	01/16/23	04/12/23
IET HOP Spring: NAHA_Nursing Assistant Health Aide ONLINE	66301	03/16/23	05/25/23
IET/IEL HOP Spring: NAHA_Clinicals_In-Person	66300	03/16/23	05/25/23

Classes labelled "Workplace Literacy"	ID	Start Date	End Date
---------------------------------------	----	------------	----------



# New Measurable Skill Gains (MSG) Options

- 
- **Postsecondary Transcript (MSG 3)** - 12+ postsecondary credit hours with IET
  - **Progress Towards Milestone (MSG 4)** - Employer evaluated outcomes in IET or workplace literacy
  - **Passage of Occupational Exam or Demonstration of Progress Attaining Technical/Occupational Skills (MSG 5)** - Federally-approved exams/certificates for IET

Programs can document and see outcomes back to July 2022

# MSG 3: Postsecondary Transcript/Report Card

## Definition:

For ABE students in an IET who complete a minimum of **12 postsecondary credit hours**:

- In a semester (full-time postsecondary students), or
- Over two completed consecutive semesters during the program year (part-time postsecondary students)

**Who has students working toward MSG 3?**



# MSG 4: Progress Toward Milestone

## Definition:

Participants who had a **satisfactory or better progress report towards established milestones from an employer or training provider** who is providing training.

- Eligible for ABE students in IET or workplace literacy program

**Who has students working toward MSG 4?**



# MSG 4: Developing the Milestones

The adult education provider needs to create milestones with the employer (or the training provider):

- Identify the **goals of the instruction** (academic, employability, digital literacy and/or other mutually agreed upon employee accomplishments).
- Milestones should be **developed before the programming** starts.
- The adult education provider and the employer (or the training provider) need to agree on how the accomplishment will be **measured**.



# MSG 5: Occupational Exam or Skills

Definition:

Participants in an IET who:

- successfully **passed an exam** that is required for a particular occupation, or
- progress in attaining technical or **occupational skills as evidenced by trade-related benchmarks** such as knowledge-based exams.

**Who has students working toward MSG 5?**



# New MSG Options by ABE Program Type

MSG	Definition	Applicable To ABE Students in:		
		Approved IET Programs?	Workplace Literacy Programs?	Other Adult Education Classes?
3	Postsecondary Transcript or Report Card	Yes	No	No
4	Progress Towards Milestone	Yes	Yes	No
5	Passage of Occupational Exam or Demonstration of Progress Attaining Technical/Occupational Skills	Yes	No	No

**Questions? Comments?**

# Employment and Wage Outcomes by Consortium

WIOA Indicators for students:

- Matched as **employed 6 months after exiting** adult education
- **Median quarterly wages** for those employed 6 months after exiting adult education
- Matched as **employed 1 year** after exiting adult education

Note:

- These are **participant** numbers, not POPs
- The top of the page identifies the year the participants exited

# Employment Outcomes by Consortium (Q2+Wage)

## Employment Six Months After Exiting ABE and Median Quarterly Wage

2022 Report (2020-21 Exited Participants)

### Participants

Dominant Consortium	Total Students	Students With SSNs in SiD	Percent with SSN in SiD	Employment Match	Percent Employed	Median Quarterly Wage
<b>Minnesota Adult Education Total</b>	<b>11859</b>	<b>7308</b>	<b>61.62%</b>	<b>4283</b>	<b>36.12%</b>	<b>\$ 6,866.00</b>
Adult Options In Education	277	177	63.90%	99	35.74%	\$ 8,000.00
Alexandria ABE/ESL	47	37	78.72%	19	40.43%	\$ 7,881.00
American Indian OIC	49	49	100.00%	26	53.06%	\$ 6,646.50
Area Adult Learning Cooperative	54	19	35.19%	11	20.37%	\$ 6,892.00
Arrowhead Economic Opportunity Agency	147	131	89.12%	64	43.54%	\$ 5,188.00
Brainerd Adult Basic Education	126	82	65.08%	57	45.24%	\$ 4,418.00
Burnsville	275	200	72.73%	129	46.91%	\$ 7,455.00
Cass Lake Bena Walker	12	9	75.00%	6	50.00%	\$ 6,281.50
Central MN ABE	510	398	78.04%	215	42.16%	\$ 6,023.00
Duluth Adult Education	190	163	85.79%	97	51.05%	\$ 4,485.00
Faribault County ABE	21	16	76.19%	6	28.57%	\$ 4,496.50
Farmington-Northfield	43	11	25.58%	8	18.60%	\$ 9,745.00



# Employment Outcomes by Consortium (1 Year)

## Employment One Year After Exiting ABE

2022 Report (2020 Exited Participants)

### Participants

Dominant Consortium	Total Students	Students With SSNs in SiD	Percent with SSN in SiD	Employment Match	Percent Employed
<b>Minnesota Adult Education Total</b>	<b>16414</b>	<b>10422</b>	<b>63.49%</b>	<b>5529</b>	<b>33.68%</b>
Adult Options In Education	251	174	69.32%	97	38.65%
Alexandria ABE/ESL	50	36	72.00%	24	48.00%
American Indian OIC	49	48	97.96%	18	36.73%
Area Adult Learning Cooperative	133	32	24.06%	19	14.29%
Arrowhead Economic Opportunity Agency	265	246	92.83%	104	39.25%
Brainerd Adult Basic Education	93	75	80.65%	42	45.16%
Burnsville	332	252	75.90%	146	43.98%
Cass Lake Bena Walker	19	16	84.21%	5	26.32%
Central MN ABE	524	438	83.59%	241	45.99%
Duluth Adult Basic Education	144	110	76.39%	59	40.97%
Faribault County ABE	11	6	54.55%	0	0.00%

# Discussion: Employment and Wage Outcomes

- What thoughts do you have about these outcomes?
- How you are using these outcomes or how could you use these outcomes?

# 2022 MNABE Report Card

One small error discovered, on MSGs for ABE students table.

Remember... no Program Improvement process associated with this data

Minnesota ABE PY 2022 Measurable Skill Gains (Level Gains and High School Credentials)					
ABE-Level Participants (12+ hours)*					
Consortium	Number of Participants (ABE Levels)	Number of Participants Rank	Number of Participants who Made a Level Gain	Number of Participants who Completed a High School Credential **	Percent of Participants with MSG ***
Hiawatha Valley AE	44	32	17	7	54.5%
Brainerd ABE	72	28	21	15	50.0%
Cass Lake Bena Walker	36	33	10	13	47.2%
Adult Options In Education	184	17	79	10	46.7%
<b>PY22 NRS Target</b>					<b>44.0%</b>
Lakeville	50	31	18	4	42.0%
SouthWest Metro	152	21	57	7	40.1%

# Program Improvement Process

In 2023-24, consortia that have low performance on accountability measures, such as MSGs, in 2022-23 may be required to participate in Program Improvement, including:

- Program Improvement workshop
- Program Improvement planning
- Technical assistance from MDE





# Upcoming SiD Webinar for ABE Administrators



**What every Program Manager  
Should Know about SiD Data  
Oversight**

**Tuesday, February 14 (10-11am)**

[Click here to register or to see  
more details](#)



# Assessment

# Statewide CASAS/TABE Usage Survey

Please complete [the survey](#) by February 10!

- Survey sent by Neill to consortium managers on 1/23/23
- Option to complete the survey for your whole consortium or forward it to others in your consortium who would be able to answer the questions.



# Assessment Training Needs

## MN ABE Assessment Training Needs

How many staff do you have who need the following training?

	0	1-5	6-10	11+
CASAS Implementation Training (for those new to CASAS)	<input type="radio"/>	<input type="radio"/>	<input type="radio"/>	<input type="radio"/>

The best time for my staff to attend the following trainings is:

	March	April	May	June	August	September	N/A - no staff participating
Implementation Trainings	<input type="radio"/>	<input type="radio"/>	<input type="radio"/>	<input type="radio"/>	<input type="radio"/>	<input type="radio"/>	<input type="radio"/>
Recertification Trainings	<input type="radio"/>	<input type="radio"/>	<input type="radio"/>	<input type="radio"/>	<input type="radio"/>	<input type="radio"/>	<input type="radio"/>
Computer-based Test Trainings	<input type="radio"/>	<input type="radio"/>	<input type="radio"/>	<input type="radio"/>	<input type="radio"/>	<input type="radio"/>	<input type="radio"/>

Our state assessment team needs your input!

Please take a couple of minutes now to fill out this assessment training needs [form](#).

Assessment Training [website](#)

# TABE Online Review & Discussion

**TOMORROW, Thursday February 2, 1:00-2:30**

- Led by TABE representatives
- Overview of TABE Online and review of using the DRC Insight portal to administer tests.
- General information, user management, and setting up test sessions
- Q & A

Registration:

<https://atlasabe.org/event/tabe-online-review-and-technology-discussion/>



# Computer-based NRS Testing

- Are you using computer-based testing (onsite or remote) in your program?
- What have been the barriers to starting or implementing computer-based testing?
- What would support your use of computer-based testing?





# Grants and Funding

# ABE 5-year Narratives

ISD709 ABE 2019 Narrative

[Home](#)

[Section One: Overview](#)

[Section Two: Accountability](#)

[Section Three: Professional Development](#)

[More](#) ▾



## Duluth Adult Basic Education

Five Year Narrative

## AREA ADULT LEARNING COOPERATIVE

2020 NARRATIVE



[Home](#)

[1 Overview](#)

[2 Accountability](#)

[3 PD & Training](#)

[4 Educational Quality](#)

[5 Integration & Collaboration](#)

[More](#)

## 5-Year Narrative

Published August 2020

### Adult Academic Program

Our mission is to help adults gain skills to find quality employment and/or prepare for college to better support themselves and their families.

[About Us - Video](#)



# 2023 Narrative Cohort

## Consortia Submitting Narratives in 2023:

American Indian OIC

Central MN - St. Cloud

Department of Corrections

Great Rivers - South  
Washington County

Rosemount/Apple  
Valley/Eagan

Southeast ABE - Owatonna

- **June 1, 2023: 5-year narrative due date**
- Summer or Fall 2023: site visit (in person or virtual)



# 2024 Narrative Cohort

2023 Narrative review process:

- 2024 Narrative cohort staff: Read and score narratives during month of June
- **Full day reviewer meeting: Tuesday, June 27, 2023 (via Zoom)**

**Consortia Submitting Narratives in 2024:**

**AEOA**

**Burnsville**

**Dakota  
Prairie-Farmington**

**Lakeville**

**NW Service Cooperative**

**Osseo**

**South Suburban-South  
St. Paul**



# Contact Hours and Funding for 2023-24



**How much  
funding will my  
program receive  
for 2023-24?**

# Resources to help answer this question

The topic of funding for 2023-24 was discussed at:

- *Fall Adult Ed Manager Meeting*, November 10, 2022 ([slides](#))
- “*Where Shall We Begin: Planning and Budgeting for the Coming Year*” webinar for Adult Education administrators, January 17, 2023 ([recording](#))

Also: talk with other ABE managers as you are planning.



# Previously discussed funding details

4 components of state ABE funding:

- Census/population count
- Contact hours
- K-12 LEP counts
- Over-25 no diploma counts

How to estimate best case/worst case scenarios with data from your consortium



# Contact Hours and Funding for 2023-24

## STARTING POINTS:

- Hours from May 1, 2022 - April 30, 2023 will be used for calculating 2023-24 funding.
- The total amount of state funding available will likely be similar to 2022-23 funding.
- **When the total amount of funding remains the same and contact hours go down, the contact hour rate goes up.**

# Contact hour comparisons

## **Table A1 (March 14, 2019 - March 13, 2020)**

- These hours were used in the calculation of ABE funding for FY21, FY22 and FY23

## **22-23 Contact Hour Reporting Period (May 1, 2022 - April 30, 2023)**

- These hours will be used in the calculation of ABE funding for FY24

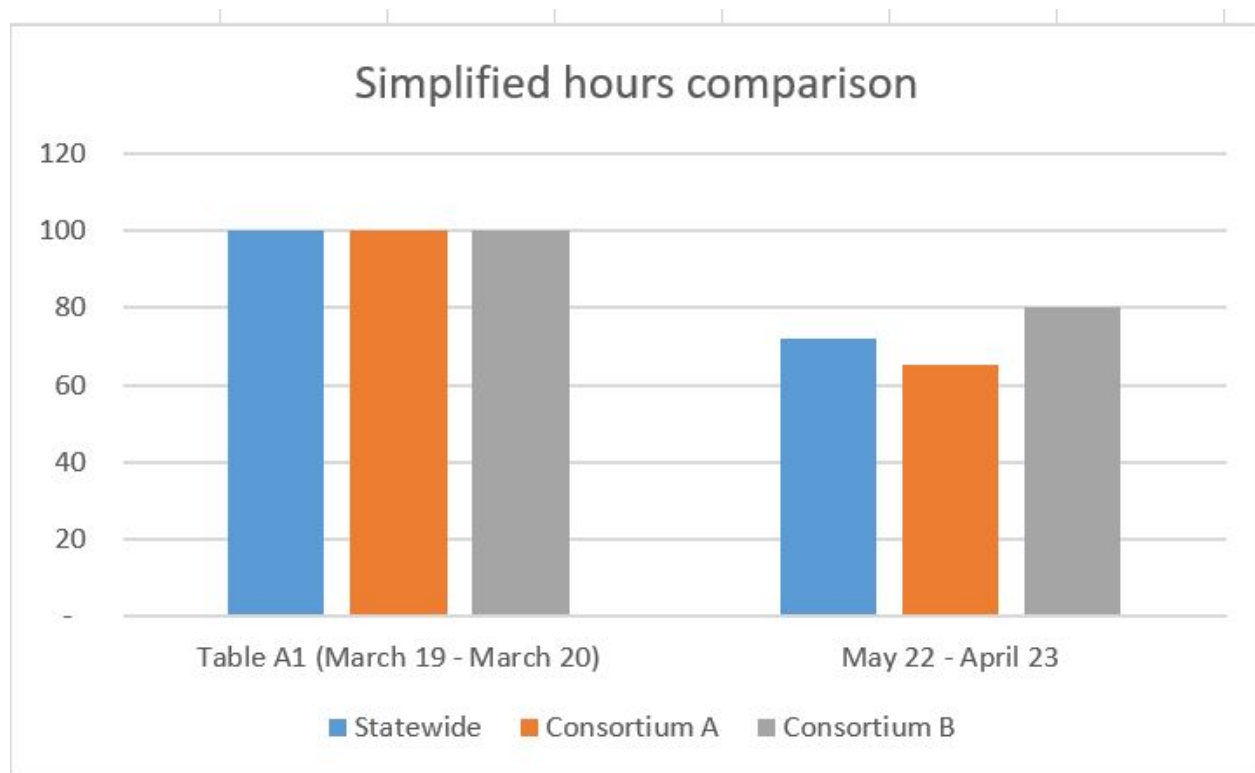
*NOTE: Starting with March 2023 hours, the month-to-month comparison is no longer possible.*

# Update on statewide contact hours

	May	June	July	August	September	October	November	December	Total
<b>2019</b>	411,343	248,445	267,127	191,801	436,358	515,243	406,459	332,032	<b>2,808,808</b>
<b>2022</b>	274,422	210,978	169,987	151,101	313,155	351,277	343,735	239,238	<b>2,053,893</b>

Statewide decline in hours = 27%

# Comparing your consortium hours to statewide hours



Consortium A can predict a decrease in funding.

Consortium B can predict an increase in funding.

# Important State ABE Funding Caveats

- Contact Hour Revenue Growth Cap
- Gross Revenue per Contact Hour Cap
- Service Disruption Adjustment for Decreased Contact Hour Revenue
- Consortium ABE aid allocations to member providers



# Caveat 1: Contact Hour Revenue Growth Cap

A consortium's state ABE contact hour revenue cannot exceed growth of **11% or \$10,000 (whichever is greater)** from one year to the next year.

*Source: Minnesota State Statutes [124D.531 \(Subd. 4b\)](#)*

## Caveat 2: \$22 Gross Revenue per Contact Hour Cap

When all four parts of a consortium's state ABE funding are combined, the total state ABE funding cannot exceed **\$22** per contact hour.

*Source: Minnesota State Statutes [124D.531 \(Subd. 4a\)](#)*

**NOTE:** In the current year (FY23), 9 out of 38 consortia hit this cap. With decreased contact hour totals, more consortia are likely to hit this in FY24.

# Proposed legislation



Potential state legislation this session could raise the Gross Revenue per Contact Hour Cap to \$30/hour.

# Caveat 3: Service Disruption Adjustment of Contact Hour Revenue

The Service Disruption Adjustment may be available to ABE grantees seeing a significant decrease in **state contact hour revenue**

- At least 10% decreased revenue for a consortium
- At least 15% decreased revenue for a program (provider)

*As long as the service disruption was caused by a factor outside of the control of the program, and reasonable actions were taken to avoid the loss of contact hours.*

If a service disruption adjustment is approved, this would add an estimated 50% of the consortium's lost contact hour revenue.

*Source: Minnesota State Statutes [124D.531 \(Subd. 10\)](#) and [124D.518 \(Subd. 4a\)](#)*

# Service disruption application

**Consortia must apply for a service disruption adjustment.**

Application timeline:

- For consortia who may hit the Gross Revenue per Contact Hour cap: the application process will open after the legislative session finishes (in case there is new statute that raises the cap).
- All other consortia must wait to apply until after initial calculation of funding is released (typically between mid June and early July).

# Service disruption adjustment

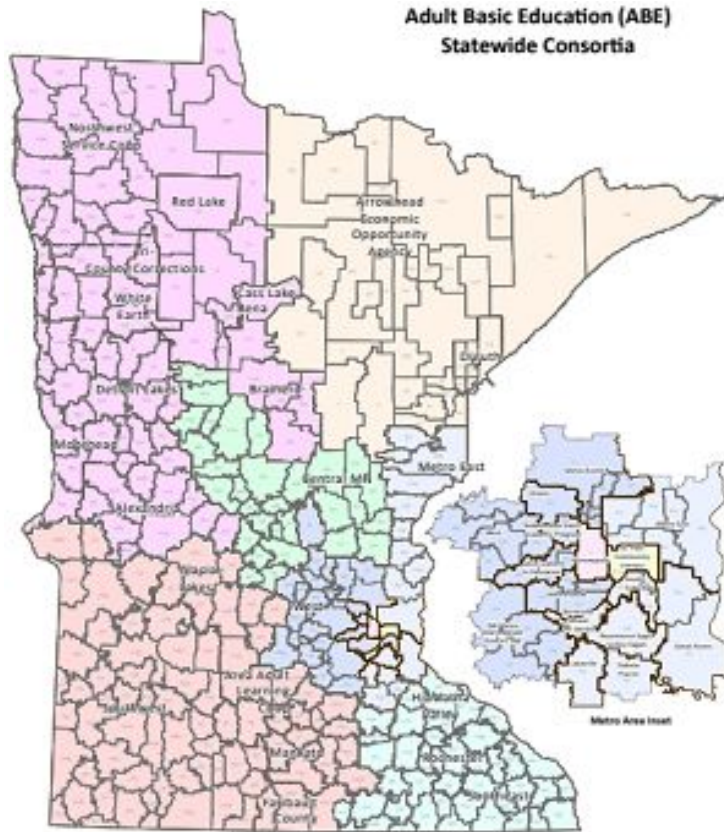
If one or more consortia apply and are approved for a service disruption adjustment after the initial calculation is released, we will run a new calculation which will redistribute funding for all consortia.

- The new calculation will increase revenue for consortia approved for a service disruption adjustment.
- To offset this, there will be a small decrease in revenue for all other consortia.





# Caveat 4: Consortium ABE funding allocations to providers



State statute outlines how the total amount of state ABE funding gets divided between consortia.

State statute does NOT define how the consortium fiscal agent flows funding to downstream providers.

# Upcoming contact hour comparisons

Email updates with statewide hours updates:

- Early March (including January hours)
- Early April (including February hours)

Continued discussion on next WebChat with MNABE:

- May 3, 2023 1:00-2:30 pm

# Transitions

# Health Care Core



- Free, online class
- Four Minnesota State college credits
- Start anytime
- Work at your own pace

Call your local ABE program or  
320-258-1111  
[hillsideadulthoodeducation@isd47.org](mailto:hillsideadulthoodeducation@isd47.org)

**SAUK RAPIDS-RICE  
HILLSIDE ADULT EDUCATION**

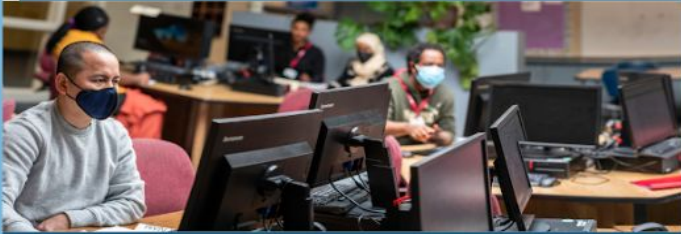
A proud partner of the  
**AmericanJobCenter**<sup>®</sup>  
network



# Health Care Core

Registration is open and ongoing. Students can attend now!

## Microsoft Office Specialist Certification Training



- Free, online course
- Earn industry recognized credentials
- Obtain up to three certificates:  
Word | Excel | PowerPoint
- 3 college credits per certificate

New classes  
begin on: Jan 25,  
Feb 22, Mar 29  
Apr 26, May 24

For more information:  
Email: [CVoshell@ISD622.org](mailto:CVoshell@ISD622.org)  
or contact your local  
Adult Education Program

Scan this code  
to fill out an  
interest form!



A proud partner of the  
**americanjobcenter**  
network



SCAN ME

## Microsoft Office Specialist Certification Training

Onboarding sessions are scheduled for:

Feb 22

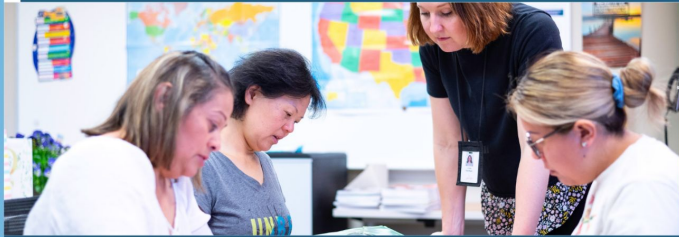
Mar 29

Apr 26

May 24

from 1-4 pm on Zoom.

# Free Paraprofessional Training Course



- Free, online course
- Earn highly qualified certificate
- Whole Group + 1:1 Support
- Mon – Thu 9:00 am to 11:00 am
- Classes begin January 23, 2023

For more information:

[adult.education@moundsviewschools.org](mailto:adult.education@moundsviewschools.org)  
(651) 621-6250



A proud partner of the  
**americanjobcenter**  
network



SCAN ME

# Paraprofessional Training

Paraprofessional Training  
Course will begin

**January 23, 2023**

**Learners can still register  
through February 2, 2023  
(Tomorrow!)**



# TEAS Preparation



September 27–December 22, 2022

Tuesdays and Thursdays

5:00–8:00pm

Online

To register please call or email  
Elizabeth Fontaine at 651-377-8654  
or [efontaine@iimn.org](mailto:efontaine@iimn.org)

**INTERNATIONAL  
INSTITUTE OF MINNESOTA**

A proud partner of the

**AmericanJobCenter**  
network



# TEAS Preparation

Test of Essential Academic Skills  
(TEAS) preparation course began:

January 23, 2023

**Learners can still register  
through February 2, 2023  
(Tomorrow!)**

# Half-day Virtual Developmental Education /Adult Basic Education Partnership Symposium

February 16, 2023

8:45 am - 12:30 pm, with optional lunch and chat session starting at 12:35

[More info & registration](#)

- Starting & Sustaining a Dev Ed/ABE Partnership
- Partnering for Developmental Ed Reading & Writing
- A College's Perspective on the Value of an ABE Partnership
- Partnering for Developmental Ed Math Courses
- The Value of a Partnership Navigator
- And hear from Minnesota State Administrators Dev Ed redesign



# Adult Career Pathways/IET Networking Webinars

## Career Sectors

- Community Interpreter Training (CIT)
- Education: ParaPro and Child Development Associate (CDA)
- Information Technology (IT): Microsoft Office Specialist (MOS)
- Food Service: Certified Food Manager Certification (CFPM) and Food Handler
- Entrepreneurship: small business
- Healthcare: certified nursing assistant (CNA), personal care attendant (PCA), and home health aide

**Network with your colleagues to dig deeper into ACP/IET career sectors.**

**Tuesday, Feb. 7    1:00pm  
- 2:30pm**

**Wed., April 19    1:00pm  
- 2:30pm**

# Ability-to-Benefit pilot of Approved State Plan

## Who is Ability-to-Benefit for?

Students who are ready to start postsecondary and complete their high school or equivalency diploma at the same time.

**Informational Webinar** *(for ABE and postsecondary staff)*

**February 13, 2023 (1:30-3pm)**

- **Preparing for Fall of 2023**
  - **Q & A session**

**Webinar Registration Link:**

**<https://minnstate.zoom.us/j/97812354595>**

# Nursing Assistant Knowledge and Skills Test

ABE learners can use the ABE code for free CNA testing through the end of the day on Friday, February 10, 2023.



# High School Equivalency

## HSE



# High School Equivalency Records Contact

All HSE Records requests should go to **mde.abe@state.mn.us**, not individual's emails. If your request is VERY URGENT, include "**urgent**" in the subject line and we will try our best to expedite it.



Please make sure you are using the most up-to-date version of the records request form and age waiver form. If your program's website has reposted the forms or content from the MDE website, please make sure that information is updated or direct people to <https://education.mn.gov/MDE/fam/abe/> directly

# This Year's Annual GED Conference



**SAVE THE DATE**  
2023 GED Annual Conference

**July 18-20, 2023** New York, NY

Sign up to our newsletter to be the first to know when registration opens. [GED.com/educators\\_admins](https://GED.com/educators_admins)

Since 2014, we have created multiple new tools, platforms, and services. These enhancements have included things such as:

- Creation of the highly effective GED.com student portal. We have made thousands of enhancements based on Educator feedback and research with learners.

- Significant expansion beyond the basic GED Manager tool created for 2014. We have made thousands of changes to better help states and programs manage their programs and student information.

- Creation of GED Ready® and GED Direct as well as GED Prep Connect.

# GED® CBT Test Price & Discounted Retake Adjustment will take effect on July 1, 2023

As with every sector of the economy, we have experienced significant increases in costs over the past decade. These range from the costs of technology and services and costs of goods

Beginning on July 1, 2023, CBT tests will increase by \$6/module

Students not passing a subject will be eligible for 1 discounted retake (not 2) for up to one year after the failed test

# Looking for Volunteers to provide feedback on “Educators and Admins” part of our website

- **25 GED Ready vouchers will be provided for an hour of your time**

The screenshot displays the GED website interface. At the top, there is a navigation bar with the GED logo, a search bar, and links for "English - US", "Educators & Admins", "Log In", and "SIGN UP". Below the navigation bar, the main content area is divided into several sections. On the left, there is a sidebar with a "GED Program Overview" menu containing links to "Why GED?", "College Readiness", "Workforce Development", "GEDWorks Program", and "In Session Blog". Below this is a "Tell Us About You" section with a form to provide feedback on the GED Testing Service, including a text input field and a "Finish" button. At the bottom of the sidebar is a "Top Resources" section. The main content area features six cards arranged in a 2x3 grid. The top row includes "Why GED?", "College Readiness", and "Workforce Development". The bottom row includes "GEDWorks™ Program" and "In Session Blog". Each card contains a header image, a title, a brief description, and a "Learn More" link.

**GED Program Overview**

- [Why GED?](#)
- [College Readiness](#)
- [Workforce Development](#)
- [GEDWorks Program](#)
- [In Session Blog](#)

**Tell Us About You**

Tell us about your experience with GED Testing Service

Tell us how GED Testing Service has helped you and your students achieve your goals

**Finish**

**Top Resources**

**Why GED?**

For more than 75 years, the GED has been a path to a better future for millions, the only high school equivalency program with proven outcomes and accepted by virtually all U.S. colleges and employers.

[Learn More](#)

**College Readiness**

GED students who attain scores on any subject within the College Ready or College Ready + Credit score levels may be eligible for college credit or certain exemptions.

[View GED College Ready Details](#)

**Workforce Development**

The GED program ensures you are preparing learners for positive outcomes. In line with the expectations of the Workforce Innovation and Opportunity Act (WIOA), our program includes robust reporting capabilities, career resources, college ready score levels, employer partnerships and more.

[Learn More](#)

**GEDWorks™ Program**

GEDWorks™ is the official employer-sponsored GED program, designed to give employers a stake in their employees' future.

**In Session Blog**

Get the latest news and updates from the GED program.

# HiSET Implementation

- ★ HiSET has changed companies (from ETS to PSI)
  - This transition has generated national disruptions
- ★ HiSET piloting in Minnesota is tentatively scheduled to launch early this year
- ★ Some sites in Minnesota have volunteered to be HiSET pilot sites.
- ★ **If you have questions please contact Brandy Logan, [brandy.logan@state.mn.us](mailto:brandy.logan@state.mn.us)**



# Professional Development

# Update on MN Adult Education PD Policy

- Draft PD requirements shared at Fall Manager Meeting & in follow-up email
- Managers asked to share feedback via a Google form



## Feedback reviewed by:

- State staff
- Statewide PD Committee
- Administrator PD Advisory Team

## Primary concerns included:

- Number of hours of required training & timeline for completion
- Funding to pay staff for training time
- Possible impacts on hiring & retention

# Revised PD Requirements - February 2023

**Required Within First 12 Months of Hire: (Full-time staff strongly encouraged to complete within 6 months of hire)**

- **ABE Foundations** (all staff)

**Only new requirement**

**Required Before Implementation:**

**Already required by existing policies**

- **CASAS Implementation Training** - before administering tests & every 5 years
- **TABE Implementation Training** -before administering tests & every 5 years
- **Distance & Blended Learning Basics Online Course** - before engaging in DL programming
- **TVM Certification** - before implementation
- **Standard Adult Diploma 101 Training** - staff from new standard adult diploma programs: before implementing programming; new staff from existing standard adult diploma programs: within a year of engaging in standard adult diploma programming

**Strongly Encouraged: (flexible timeline)**

- CCRS Foundations - ELA (ELA teachers & admin)
- CCRS Foundations - Math(Math teachers & admin)
- ACES Foundations (teachers & admin)
- Northstar Foundations (teachers & admin)



# MN ABE CONNECT

*Brought to you by the Minnesota Adult Education Support Network:*

ATLAS | Literacy Action Network | Literacy Minnesota | Minnesota  
Association of Workforce Boards | PANDA - MN ABE Physical and  
Nonapparent Disability Assistance | Southwest Adult Basic Education

## Deadlines & Registration

- [MobyMax Webinar #2: Moby 101 for Teachers](#) - 10-Jan-2023
  - **Deadline: TUE. 1/10/23**
- [Where Shall We Begin? Planning and Budgeting for the Coming Year](#) - 17-Jan-2023
  - **Deadline: TUE. 1/17/23**
- [ABE-Dev Ed Affinity Group Meeting](#) - 19-Jan-2023
  - **Deadline: THU. 1/19/23**
- [MobyMax Webinar #3: Assignment Workshop](#) - 19-Jan-2023
  - **Deadline: THU. 1/19/23**
- [ABE-Dev Ed Affinity Group Meeting](#) - 20-Jan-2023

## PD Newsletter

- ❖ Sent to all of our lists every Tuesday
- ❖ ALL upcoming events, deadlines, PD information, instructional resources & strategies, tech tips (new!)
- Do you and your staff read/open the newsletter? Why or why not?
- What can we do to encourage practitioners to skim the newsletter for important info?

# Teacher Verification Model (TVM): NEW Certification Option

As of February 2023, there are now **two** pathways to TVM Certification: 1) Attend a live certification **webinar** or 2) Attend an **individual coaching call** with a TVM Team member.

- **More info about TVM and the certification process:**

<https://www.literacymn.org/teacher-verification-model>

<https://atlasabe.org/news/mn-teacher-verification-model-update-now-two-pathways-to-tvm-certification/>

- **Questions about TVM or any other DL-related topic?**

[support@mnabedistancelearning.zendesk.com](mailto:support@mnabedistancelearning.zendesk.com)



# Building an EdTech Strategy Toolkit (BEST) Cohort - Application Extended

**Applications open through Friday, February 3**

**Apply online to join us!**

**<https://tinyurl.com/EdTechStrategy2023>**

- Explore & evaluate educational technology tools for your in-person or online class.
- Develop routines for your classroom that will help you make technology integration a regular part of your instruction.





# Cultural Competency–PELSB Required Training

February 10 & February 24, 2023

8:30am-12pm (**both days required**)

Registration open now!

PELSB-approved for relicensure

Adapted for Adult Education

Lead Facilitator:

Dr. Rose Chu, with  
Andrea Echelberger



ABE Teaching & Learning Advancement System



# Administrator Webinar Series

## **Making it Work: 5 Creative Programming Solutions from Adult Ed Managers Across the State**

February 21 @ 1:00 - 2:00 pm



# EBRI (Evidence-Based Reading Instruction) Webinar Series

Participants will learn about:

- EBRI & the 4 reading components
- Diagnostic Reading Assessment
- Incentives, routines, and resources for teaching alphabetics, vocabulary, fluency, and comprehension

Facilitated by Marn Frank

Fridays, 1:00-2:30:

- February 10
- February 24
- March 3
- March 17
- April 14
- May 5

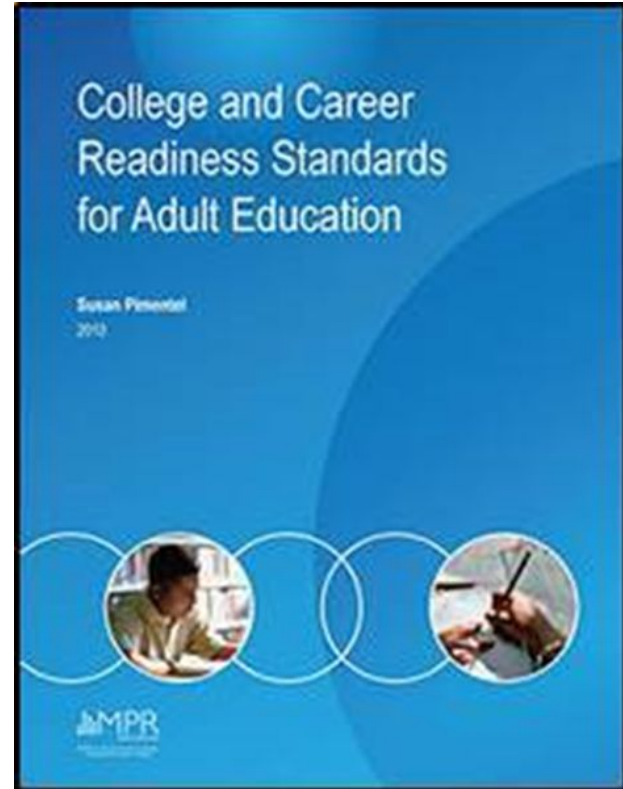
# CCRS Support Webinars

## **Text Complexity: What? Why? How?**

February 9 - 2:30-4:00

## **A Shift in Perspective: Evaluating Lessons & Resources with an Updated CCRS Tool**

April 11 - 2:30-4:00





## **ACES / Transitions**

Academic, Career & Employability  
Skills

Webinars are 1:30-3:00

- February 28
- March 21
- April 18

**Check out the newly updated  
Transitions Integration Framework (TIF)!**

Look at new lesson plans and routines!

Explore great resources!

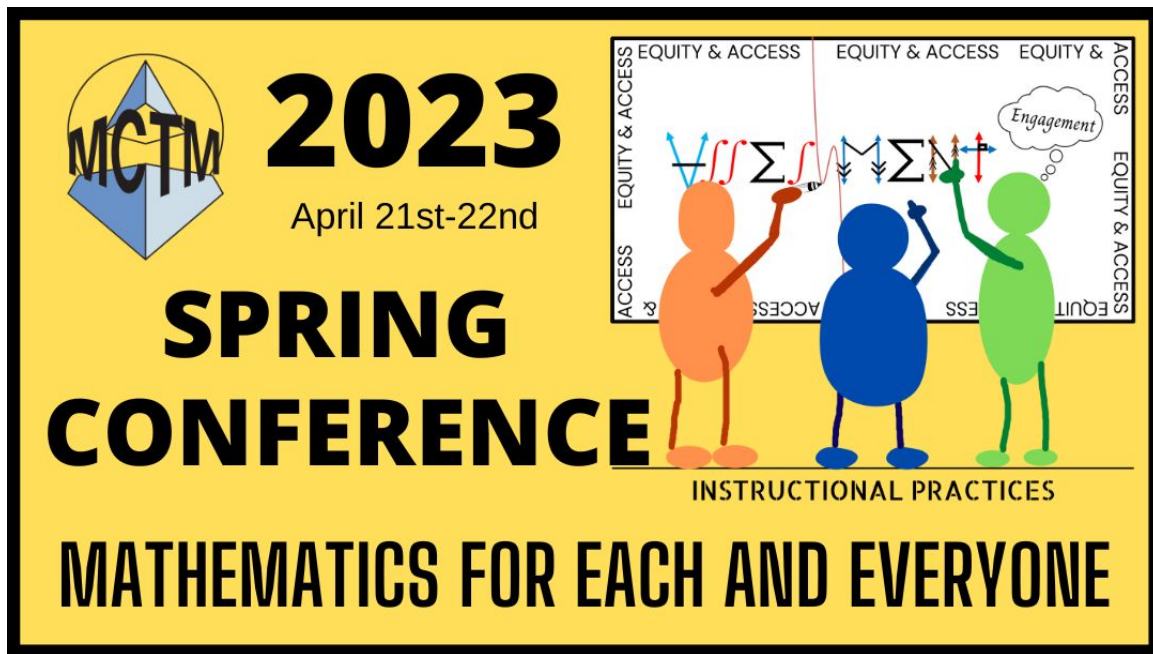
# MCTM (Minnesota Council of Teachers of Mathematics) Conference

**April 21-22 in Duluth**

Scholarships available  
through ATLAS again this  
year!

- Look for more  
information in the  
February 14th  
newsletter.

[Conference information](#)





# Statewide Virtual Conference

**April 28, 9:00 - 4:00**

- State updates
- Concurrent sessions
- Coffee breaks

**Registration opens in March!**



**August 15th to 18th, 2023**

The Park Event Center - Waite Park

Keynote Speaker: Brandy Logan, MDE

*ABE: Ghost Writers to Your Students' Stories*

**Call for Proposals - [Available](#) now!**

Deadline - March 31st

Registration opens in early May



# NEW! Northstar Digital Literacy Foundations Course



Learn about the **Northstar Digital Literacy Standards** and how to integrate them into your instruction.

Self-paced course available through [Literacy Minnesota's online training portal](#)

The background is a vibrant, abstract composition of overlapping circles and semi-circles in various colors including orange, yellow, red, purple, blue, and green. Interspersed among these shapes are several question marks of different sizes and colors, creating a theme of inquiry and uncertainty.

# Questions?



# Materials

The recording, slides and  
handouts will be posted on the  
[Literacy Action Network website.](#)



# Next WebChat

May 3, 2023

([Annual Grant Application Webinar](#))

1-2:30pm



**Thank You!**



**mde.abe@state.mn.us**

# Questions?

**Neill Allard** (*Neill.allard@state.mn.us*)

**Julie Dincau** (*Julie.dincau@state.mn.us*)

**Brad Hasskamp** (*Brad.hasskamp@state.mn.us*)

**Astrid Liden** (*Astrid.liden@state.mn.us*)

**Brandy Logan** (*Brandy.logan@state.mn.us*)

**Jodi Versaw** (*Jodi.versaw@state.mn.us*)