

Welcome to WebChat with Minnesota Adult Education!



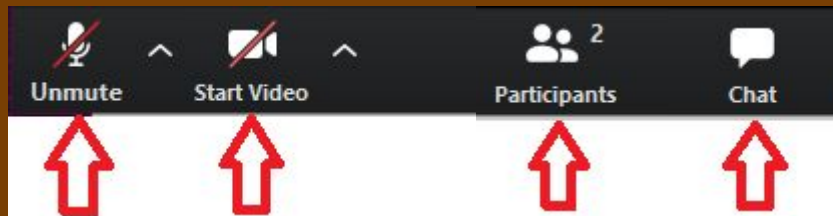
- We'll begin at 1:00.
- Please stay muted to reduce background noise.
- If you are having any tech issues, please chat to Wendy Her for assistance.

Check-In Discussion (introduce yourself, your program, and enter responses in the chat):

- What is your student enrollment like for fall? How does that compare to other years?

For today's WebChat session

- For tech help, chat to Wendy Her
- Use your first & last name - just like a name tag! Feel free to add your pronouns.
- Bottom of screen: hover your mouse to reveal toolbar



Keep mic and video off
(looks like this - red line)

Open Chat box
& keep it open





Recording Today's Session

The recording will be posted on the Literacy Action Network website.



WebChat with Minnesota Adult Education

Wednesday, September 21, 2022



Agenda

1. Welcome and Introductions
2. Announcements
3. Transitions
4. Accountability
5. Grants and Finance
6. High School Equivalency
7. Professional Development
8. Questions

Strategic Approaches to Distance Learning (2:35-3:30)

A large stone sign shaped like the state of Minnesota. The word "Minnesota" is written in red cursive script across the middle. Below it, the words "Welcome You" are written in black block letters. The sign is set against a blue sky with white clouds.

Adult Education Team @ MDE

Brad Hasskamp, State Director

Jodi Versaw, Program Quality

Julie Dincau, Transitions

Astrid Liden, Professional Development

Brandy Logan, HSE & Accountability

Neill Allard, Records, Communications, and
Admin Support

New team member joining this year!

National Adult Education and Family Literacy Week

September 18-24, 2022

Please share in the chat a **meaningful moment** you have had in adult education.



Why are Adult Education classes important to you?

“Education is everything. You need education to get better jobs. It’s important to be able to start with a GED at least, and sometimes in our countries we’re not able to finish our education for many reasons. When we get here we find out that we need to get better because **we need better jobs, better salaries, better incomes for our families. And that starts with education.**”

- ABE student Angelica

Why are Adult Education classes important to you?

"For me it was **wonderful and great**, because when I came to this country I no talk any words in English...In my first six months, **I told my husband... I want to leave.** I want to get divorced. I made a mistake. I no have friends here. I no have nobody for talk. But when my husband got me in the school, he told me, '**Come on, we need to try because I love you.**'

This was a big difference in my life...

Right now I have **more opportunities.** I work with my husband. I go to a painting class...I can talk with many people...I can read the newspaper. I can look the movies. **I can talk with my grandsons."**

- ABE student Nelsy

#IamABE

The National Suicide Prevention Lifeline is now:

988 Suicide and Crisis Lifeline



- Text, call or chat **988**
- The Lifeline provides 24/7, free and confidential support for people in distress
- Tele-interpreter service supports over 150 languages
- <https://988lifeline.org/talk%20to%20someone%20now/>

Transitions

Local Workforce Partners

The Memorandum of Understanding (MOU) includes the Infrastructure Agreement (IFA).

ABE partners need to be included in the planning of the MOU.



December 30, 2022

Health Care Core



- Free, online class
- Four Minnesota State college credits
- Start anytime
- Work at your own pace

Call your local ABE program or
320-258-1111

hillsideadulthoodeducation@isd47.org

**SAUK RAPIDS-RICE
HILLSIDE ADULT EDUCATION**

A proud partner of the

AmericanJobCenter*
network



Health Care Core

Registration is open and ongoing. Students can attend now!

TEAS Preparation



September 27–December 22, 2022

Tuesdays and Thursdays

5:00–8:00pm

Online

To register please call or email
Elizabeth Fontaine at 651-377-8654
or efontaine@iimn.org

**INTERNATIONAL
INSTITUTE OF MINNESOTA**

A proud partner of the

AmericanJobCenter
network



TEAS Preparation

Test of Essential Academic Skills
(TEAS) preparation course will
begin:

SEPTEMBER 27, 2022

**Refer potential nursing
students now!**

Microsoft Office Specialist Certification Training



- Free, online course
- Earn industry recognized credentials
- Obtain up to three certificates:
Word | Excel | PowerPoint
- 3 college credits per certificate

**New classes
begin on:**

**October 26
November 30
December 12**

For more information:
Email: CVoshell@ISD622.org
or contact your local
Adult Education Program

Scan this code
to fill out an
interest form!



A proud partner of the
americanjobcenter
network

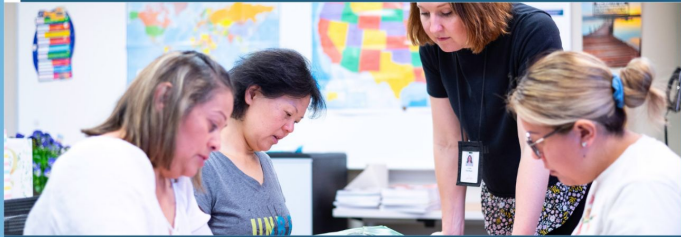


MOS Certificate Training

Microsoft Office Specialist
Certification Training will
begin onboarding students:

October 26, 2022

Free Paraprofessional Training Course



- Free, online course
- Earn highly qualified certificate
- Whole Group + 1:1 Support
- Mon - Thu 9:00 am to 11:00 am
- Classes begin January 23, 2023

For more information:

adult.education@moundsvIEWSchools.org

(651) 621-6250



A proud partner of the
americanjobcenter
network



SCAN ME

Paraprofessional Training

Paraprofessional Training
Course will begin

January 23, 2023

Adult Career Pathways - Rochester ABE Bridges to Careers

Spotlight On

Adult Career Pathways

Adult career pathways aim to serve the unique needs of adult learners as well as local employers.

A career pathway is a comprehensive set of programs and services designed to help working learners earn postsecondary credentials that lead to well-paying jobs in high-demand fields. They are the result of collaborations among local educators, workforce development professionals, and employers. Being attuned to the needs of local industries, career pathways help supply local businesses with skilled labor—while helping students find jobs that pay well and offer room for advancement.

Career pathways are tailored to adult learners with significant work and family responsibilities.

A career pathway includes an integrated series of connected educational and training programs that helps students to advance over time to successively higher levels of education and employment in a given sector. Working learners move through training programs at their own pace, while reaping on-the-job benefits at each step. Academic skills education and career training are integrated, allowing students to gain foundational academic skills while preparing for a career. Courses are often offered on evenings and weekends and incorporate on-line learning.

Support services are key components of adult career pathways.

Support services help remove barriers to program completion as an individual moves through education into employment. Services can include:

- » Academic and career counseling, assessment, and planning
- » Academic support

Federal Definition: Career Pathway

The term “career pathway” means a combination of rigorous and high-quality education, training, and other services that—

- (A) aligns with the skill needs of industries in the economy of the State or regional economy involved;*
- (B) prepares an individual to be successful in any of a full range of secondary or postsecondary education options, including apprenticeships...;*
- (C) includes counseling to support an individual in achieving the individual’s education and career goals;*
- (D) includes, as appropriate, education offered concurrently with and in the same context as workforce preparation activities and training for a specific occupation or occupational cluster;*
- (E) organizes education, training, and other services to meet the particular needs of an individual in a manner that accelerates the educational and career advancement of the individual to the extent practicable;*
- (F) enables an individual to attain*

Integrated Education and Training - International Institute Dietary Aide

Spotlight On

Integrated Education and Training

Integrated Education and Training (IET) blends career training, basic skills education, and work readiness preparation to get the most out of each. Combining these offerings better meets the multi-faceted needs of adult learners, building academic skills and improving work readiness in the context of a career—saving students time and money while boosting the practical relevance of their study.

IET programs must fit into broader adult career pathways, per federal guidance on the Workforce Innovation and Opportunity Act (WIOA). IET can involve co-teaching, with ABE/English as a Second Language (ESL) and career and technical instructors working together in the same classroom.

*“A service approach that provides
adult education and literacy activities
concurrently and contextually with
workforce preparation activities
and workforce training
for a specific occupation or occupational cluster for the purpose of
educational and career advancement.”*

Workforce Innovation and Opportunity Act, 29 U.S.C. § 3272 (2020)

Workforce Preparation Activities
(WIOA DEFINITION)

Proven Impact

IET participants have better outcomes than other basic skills students, including those also enrolled in separate workforce training. They were more likely to:

- » Continue into credit-bearing coursework
- » Earn credits that count toward a college credential
- » Earn occupational certificates
- » Make point gains on basic skills tests

How I-BEST Works (Jenkins et al. 2010)

Workforce Training (WIOA DEFINITION)

“may include:

- (i) occupational skill training...;*
- (ii) on-the-job training;*
- (iii) incumbent worker training...;*
- (iv) programs that combine workplace training with related instruction...;*

Workplace Literacy - Great Rivers ABE and Andersen Windows

Spotlight On

Workplace Literacy

Employer-educator partnerships don't only take place in the classroom. They can also extend into the workplace, with a goal of boosting workplace preparedness and productivity. Work-based learning opportunities can increase **workplace literacy** while building **English proficiency** and **academic skills**.

Working together, educators and employers can ensure that adult education programs are relevant to current workforce needs—helping students to build skills that lead to employment and advancement while nurturing a skilled workforce central to the success of local and regional industries.

“...critical thinking skills, digital literacy

Employer-educator partnerships can:

- » Increase foundational skills within the context of a workplace
- » Build job skills that lead to employment and/or internal job promotion
- » Teach the work-readiness “soft skills” critical to job success while providing opportunities to build professional relationships
- » Provide stepping stones for low-wage, entry-level workers to more productive employment
- » Ensure career pathways and integrated education and training programs are responsive to current and future workforce needs

Workplace Adult Education and Literacy Activities

*The term “workplace adult education and literacy activities” means adult education and literacy activities offered by an eligible provider **in collaboration with an employer or employee organization at a workplace or an offsite location** that is designed to improve the productivity of the workforce.*

Workforce Preparation Activities

The term “workforce preparation activities” means activities, programs, or services designed to help an individual acquire a combination of basic academic skills, critical thinking skills, digital literacy skills, and self-management skills, including competencies in

- (i) utilizing resources,
- (ii) using information,
- (iii) working with others,
- (iv) understanding systems, and
- (v) obtaining skills necessary for successful

Ability-to-Benefit: The State Defined Process Pilot

College	College Contact	ABE Contact
Minneapolis	Heidi Aldes	Damon Basset Margo Rainwater
Pine Technical College	Kierstan Peck	Sally Welsh Jami Kritzeck
Riverland	Barb Embacher	Penny Jahnke
Southeast College	Tammy Vondrasek	Chris Dahlke Jill Rivard

Accountability

A close-up photograph of a dartboard with several darts. The darts are silver and black, with their tips pointing towards the center. The background is a soft, out-of-focus blue. The title 'Statewide Targets' is overlaid on a dark blue rectangular box in the upper right corner.

Statewide Targets

Targets are annual performance goals set with the U.S. Dept of Education for our statewide adult education system.

Targets have changed significantly because of COVID-related changes to programming.

Minnesota Adult Education Targets

WIOA Indicator	Target for 2022-23	2020-21 Outcomes
Measurable Skill Gain (MSG)	27.5%	23.0%
Employment Rate 6 months after exiting ABE	34.3%	34.3%
Employment Rate 1 year after exiting ABE	35.4%	35.3%
Median Quarterly Earnings	\$6,190	\$6,188
Credential Attainment	19.3%	19.0%

Credential Attainment Indicator

Participants that either:

- Earned a diploma AND then 1 year after exiting ABE were
 - Employed or
 - Enrolled in postsecondary education or training

OR

- Were co-enrolled in ABE and postsecondary education and completed a postsecondary certificate within 1 year of exiting ABE

Program Improvement Process

In 2023-24, consortia that have low performance on accountability measures, such as MSGs, in 2022-23 may be required to participate in Program Improvement, including:

- Program Improvement workshop
- Program Improvement planning
- Technical assistance from MDE



Grants and Finance

Integrated English Literacy and Civics Education Grantees 1

- Adult Options in Education
- Great Rivers Adult Education
- Hmong Cultural Center
- International Institute of Minnesota
- Literacy Minnesota
- Mankato Area Public Schools



Integrated English Literacy and Civics Education Grantees 2



- Metro North Adult Basic Education
- Metro South Adult Basic Education
- Minneapolis Adult Basic Education
- Neighborhood House
- Southeast Adult Basic Education - Owatonna
- Saint Paul Public Schools



FIN 166 (2021-22 Additional ABE Funding)

Two Final Reports!

- **Financial Reporting Forms (FRFs):** The MDE Grants Team will send updated FRFs to the consortium managers after they finish processing invoices from the January-June 2022 FRFs (Financial Reporting Forms). Because these are delayed, we will extend the deadline for the final FRFs for the July-August 2022 (originally due in September).
- **Final Outcomes Report:** Each consortium must submit one report (Google Form) by October 31, 2022.

FIN 166 Final Outcomes Report

Report Questions

- **Consortium and Contact Person**
- **Enrollee, Contact/Proxy Hours, Participant, Measurable Skill Gain Data** for those helped by the funding
- **Description of how the funding was used**

2021-22 Additional ABE Funding (FIN 166/665) Outcomes Report

AKA: SFRF/Strengthening ABE Programming Grant

Due: October 31, 2022

(If you cannot complete the online report, you can complete this report instead and send the completed report to neill.allard@state.mn.us.)

Instructions:

Please provide the outcomes that occurred with the ABE consortium's use of the 2021-22 Additional ABE Funding (FIN 166/665). If the funding supported all aspects of the consortium's programming, use the entire consortium's enrollee count and outcomes. If the funding supported specific sites, classes, or programming, please provide the counts and outcomes for those specific parts of the program.

 bhasskamp@gmail.com (not shared) [Switch account](#) 

* Required

What is the name of the consortium?

Your answer _____

What is the name of the person completing this form?

Your answer _____

ABE 5-year Narratives

ISD709 ABE 2019 Narrative

[Home](#)

[Section One: Overview](#)

[Section Two: Accountability](#)

[Section Three: Professional Devel...](#)

[More](#) ▾



Duluth Adult Basic Education

Five Year Narrative

AREA ADULT LEARNING COOPERATIVE

2020 NARRATIVE



[Home](#)

[1 Overview](#)

[2 Accountability](#)

[3 PD & Training](#)

[4 Educational Quality](#)

[5 Integration & Collaboration](#)

[More](#)

5-Year Narrative

Published August 2020

Adult Academic Program

Our mission is to help adults gain skills to find quality employment and/or prepare for college to better support themselves and their families.

[About Us - Video](#)



2023 Narrative Cohort

American Indian OIC

Central MN - St. Cloud

Department of Corrections

**Great Rivers - South
Washington County**

**Rosemount/Apple
Valley/Eagan**

Southeast ABE - Owatonna

- November 2, 2022: Narrative Writers Workshop (virtual full-day session)
- June 1, 2023: 5-year narrative due date



2024 Narrative Cohort

Required to review narratives submitted in June 2023

- Read and score narratives during month of June
- Full day reviewer meeting towards the end of June, date coming soon

AEOA

Burnsville

**Dakota
Prairie-Farmington**

Lakeville

**NW Service
Cooperative**

Osseo

**South Suburban-South
St. Paul**



Reminder: Carryover unused state ABE funds

Time is running out to use up any remaining FY22 State ABE Funding!

Up to 20% of state funds can be spent between July 1 and September 30 of the following fiscal year (“Quarter 5”).

When carrying over funds in this way, be sure they are course coded correctly. The course code for FY22 funds is 002.



UFARS course codes for carryover

Course codes to use for carryover

FY22 = 002

FY23 = 003

FY24 = 004

etc.



Contact Hours and Funding for 2023-24

IMPORTANT NOTES:

- Hours from March 2019 - March 2020 will not be used in the funding formula again.
- Hours from May 1, 2022 - April 30, 2023 will be used for 2023-24 funding.
- While the overall total amount of state funding available will likely remain steady, the shift back to actual hours could result in more variation for individual consortia/grantees.
- Our MDE team will partner with Literacy Action Network to keep everyone as informed and prepared as possible.

Contact Hours Comparison

	May	June	July	total
2019	411,343	248,445	267,127	926,915
2022	274,422	210,975	169,961	655,358

Statewide decline in contact hours = 29%

Implications

When the total amount of funding remains the same and contact hours go down, the contact hour rate goes up.

This is likely to happen for 2023-24 funding.

However, there are two caps at play:

- Contact hour revenue growth cap of 11%
- Gross revenue per contact hour cap of \$22/hour

Take-aways

It's difficult to predict how funding will be distributed for next year. We encourage you to plan and deliver high-quality Adult Education programming that meets the needs of your community, with the assumption that hours and funding will follow.

Stay informed:

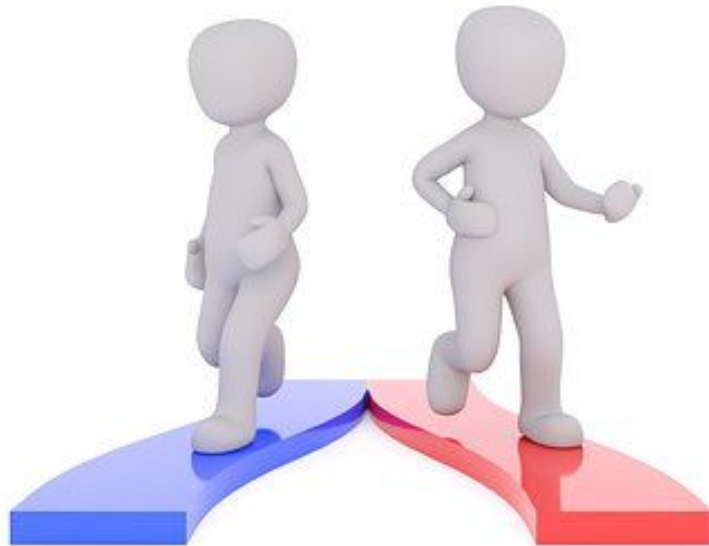
- More discussion at Fall Managers Meeting on Nov 10
- More communication from Literacy Action Network (LAN) and MDE to come

High School Equivalency

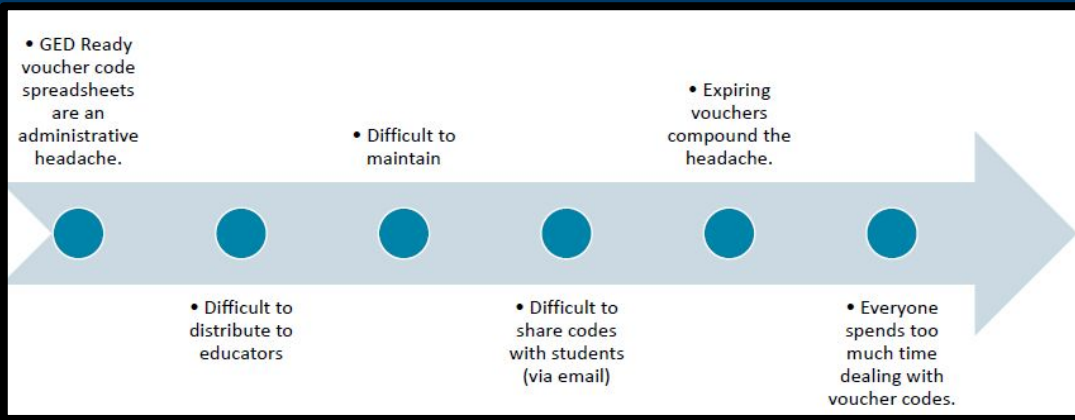
HSE

2 options to purchase vouchers

**GED
Direct**



**GED
Marketplace**



Solution – GED Direct

Allows educators to purchase GED Ready tests and **ASSIGN** them directly to students

Benefits:

- Students access GED Ready test directly from their GED account once assigned
- No spreadsheets of voucher codes to manage
- No expiration dates to extend

Purchase Menu on Navigation Bar

GED Manager™ Home Manage Student GED Direct Reporting

Home

Role

Buy
Manage Assignments
Order History

GED Ready Test
Retail Price =
\$6.99/test

Direct Price =
\$5.00/test for 1

**The more you
buy the more
you save!**

GED Ready Direct Discounts

GED Ready Test
Retail Price =
\$6.99/test

Direct Price =
\$5.00/test for 1

**The more you
buy the more
you save!**

\$5.00

Quantity

Add To Cart

Quantity	Unit Price
1 - 24	\$5.00
25 - 49	\$4.75
50 - 99	\$4.50
100 - 499	\$4.00
500 - 999	\$3.75
1000 - 2499	\$3.50
2500 - 4999	\$3.25
5000+	\$3.00

Assign Test to Student

Manage Assignments

GED Direct Dashboard

GED Ready Practice Tests

Group's unassigned	You've assigned	You've used
4 ±	4	0

In-Person GED Tests

Group's unassigned	You've assigned	You've used
0 ±	0	0

Online Proctored GED Tests

Group's unassigned	You've assigned	You've used
0 ±	0	0

Buy

Assign

Share

- Click Manage Assignments from dashboard
- Click Assign

- Assign Test pop-up box allows you to find student (only students you have access to)

Assign to Student cont'd.

Assign Test

Filter Students By:

Jurisdiction

Program

Select a Student:

Search by Last Name

Continue

Cancel

Assign Test to Chosen Student

Assign Test

Which test do you want to assign to Brian Jones?

- GED Ready Practice Test
- In-Person GED Test
- Online Proctored GED Test
No GED Ready Green Scores

Continue

Back

→ Choose test for student

Assign Test Subject

Assign In-Person GED Test ×

Which subject(s) would you like to assign to Brian Jones?

- Language Arts
- Social Studies
GED Ready In Progress
- Science
GED Ready In Progress
- Math

Assign

Back

→ Choose test subject for student

Assigned Date	Status
02/09/2021	Not Started (unassign)
02/09/2021	Not Started (unassign)
02/09/2021	Not Started (unassign)



Can I UNASSIGN?

If student has not launched GED Ready test or scheduled their GED test, it can be unassigned and will go back into pool of available test. Just click “unassign” in status column of Manage Assignments screen.

IMPORTANT INFORMATION!

- The vouchers you purchase via this method are for the full price of the 3 different tests (GED Ready, CBT Test and OP Test)
- If you would like to purchase \$10, \$15, \$20 or \$26 vouchers please note these can be purchased at GED Marketplace (<https://shop.gedmarketplace.com/>) – NOT VIA GED DIRECT
- When you go to GED Marketplace, click on “GED Test (Vouchers)”. Then, click on the state of MN

Home > selector

GED Test Vouchers: Select your state



Questions?

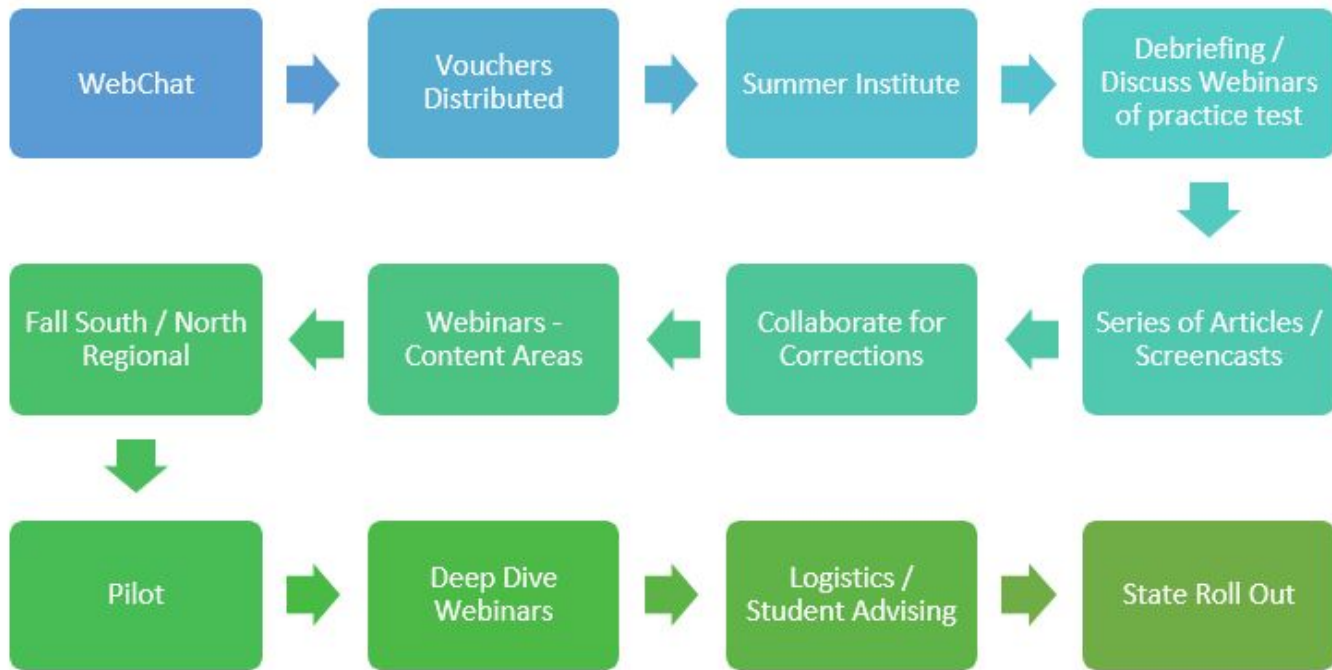
Melissa Hultstrand
Melissa.Hultstrand@ged.com

We are here!

October

10-12 testing sites

Corrections included





Official Practice Test (OPT) Vouchers

Have You Gotten Your OPT Voucher?

Communication went out to your consortium managers on how to get access to OPT vouchers for staff **AND** students. If you or your program need help, please email me.

brandy.logan@state.mn.us



HiSET OPT Debriefing Webinars

Special thanks to:

- ★ ATLAS
- ★ Kristine Kelly
- ★ Lindsey Pust

Recordings:

Webinar 1 - [Math & Science](#)

Webinar 2 - [Reading, Writing, Social Studies](#)



Professional Development

Upcoming HiSET PD Opportunities

Deep Dive Webinars hosted by HiSET

- October 10 @ 2-4:00pm - Reading Comprehension across the Subtests
- October 24 @ 2-4:00pm - Writing Fluency
- October 31 @ 2-4:00pm - Mathematics & Educator and Test Taker Resources

HiSET Sessions at Fall Regionals

- What's Up with the HiSET Language Arts-Writing Test?
- HiSET OPT Debrief Discussion



Virtual Math Institute - This Friday!

Friday, September 23

9:00-3:00

- Morning sessions with Dan Meyer
- Afternoon breakouts with local math presenters, including a session for program leaders on improving math offerings

[Register now!](#)



Guest presenter: Dan Meyer

Internationally known math educator
& Chief Academic Officer at Desmos

Fall Regionals - In Person!

Registration is open!

South Regional - Mankato

Friday, September 30

North Regional - Walker

Thursday, Oct. 13 - Friday, Oct. 14

Session topics include:

- HiSET
- Student recruitment & outreach
- Lesson planning with ACES TIF
- Northstar
- Mental health in the classroom
- Reading
- Math
- ESL
- Google slides
- HyFlex
- And more!

Fall/Winter PD Events

- **ABE Math Institute** - Sept. 24 (virtual)
- **Fall South Regional** - Sept. 30 (in-person, Mankato)
- **Fall North Regional** - Oct. 13-14 (in-person, Walker)
- **CTE Works! Summit** - Nov. 1 (in person, Alexandria)
- **Fall Manager Meeting** - Nov. 10 (in-person)
- **Support Services Conference** - Nov. 17-18 (virtual)
- **Minnesota English Learner Education (MELEd) Conference** - Nov. 18-19,
St. Paul River Centre
- **Volunteer Management Conference** - Dec. 2 (virtual)
- **Language and Literacy Institute** - Jan. 26-27 (in-person, Bloomington)
- **Spring Virtual Conference** - Apr. 28 (virtual)



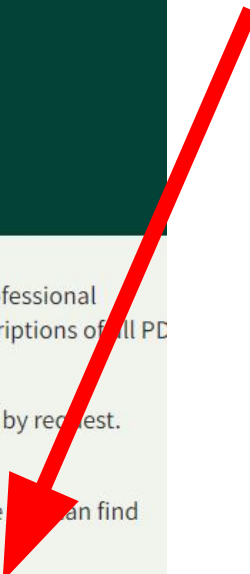
Professional Development Catalog

The online Minnesota Adult Education PD Catalog provides an overview of all MN Adult Ed professional development (PD) activities in one convenient, searchable place. Here you will find brief descriptions of all PD offerings currently provided by the **Minnesota Adult Education Support Network**.

Note: Not all activities listed here have been scheduled yet, and many can be provided to you by request. Others are available on an ongoing basis.

- Scheduled activities are linked to the MN Adult Ed **Events Calendar** or other sites, where you can find registration and more details.
- For an overview of upcoming PD activities for the year, see **FY23 MN Adult Ed PD Dates**.

A complete list of all [FY23 PD events](#) that have been scheduled to date is available on the [MN Adult Education PD Catalog](#).



ABE Foundations at a Distance

Help your new staff get off to a great start!

[Webinar series](#) to complement the
[ABE Foundations Online Course](#)

- October 18, 1:30-3:00
- October 25, 1:30-3:00
- November 1, 1:30-3:00



Topics include:

- Introduction to ABE Students
- MN Adult Secondary Credentials
- MN ABE Model & Delivery System
- MN ABE Policy & Accountability
- Introduction to MN Content Standards for ABE
- Volunteers
- Professional Development Resources

CCRS Foundations Refresher Webinars

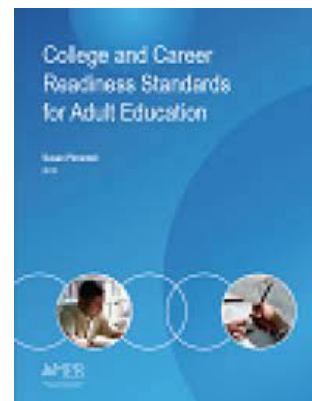
Time for a CCRS refresher?

- *Do I remember the math shifts and the standards for mathematical practice, and the difference between them?*
- *Do I remember what the three aspects of Rigor are and why they are important?*
- *Do I remember how to measure text complexity, both qualitatively and quantitatively?*
- *Do I remember the progression of text dependent questions that is outlined by Fisher and Frey?*

Attend a CCRS Refresher webinar!

Option to join an ELA breakout group or a math breakout group

- **October 5, 2022 @ 9:00-10:15**
- **October 12, 2022 @ 3:00-4:15 pm (repeat of October 5)**



CASAS and TABE Implementation Training

CASAS Implementation Training

October 7 @ 9:00 am - 12:00 pm

[More info and webinar link](#)



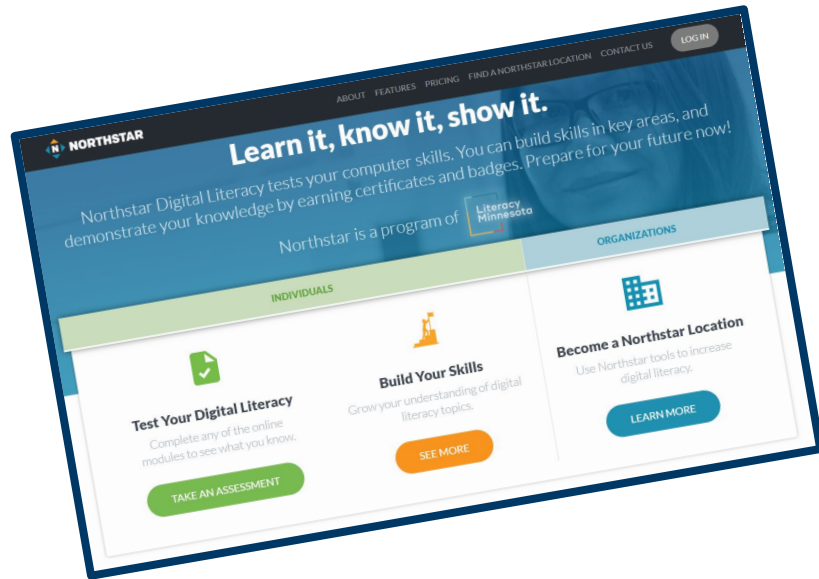
TABE Implementation Training

October 7 @ 12:30 pm - 3:30 pm

[More info and webinar link](#)



NEW! Northstar Digital Literacy Foundations Course



Learn about the **Northstar Digital Literacy Standards** and how to integrate them into your instruction.

Self-paced course available through [Literacy Minnesota's online training portal](#)

Need an **ACES Refresher?**

Thursday, Oct. 13, 1-4 at the North Regional in Walker

Get reacquainted with **ACES/TIF sample lesson plans & updated lesson planning template** at Fall South and North Regionals

TIF 2.0 webinar series:

- Feb. 28, 2:00-2:30
- March 21, 2:00-2:30
- April 18, 2:00-2:30



Teacher Verification Model (TVM)

Upcoming TVM Certification Webinar:

- Monday, October 3, 2:00-4:00

*TVM certification webinar registration info in the TVM module of the [Distance and Blended Learning Basics for Minnesota Adult Education](#) online course.

- **More info about TVM and the certification process:**
<https://www.literacymn.org/teacher-verification-model>
- **Questions about TVM or any other DL-related topic?**
support@mnabedistancelearning.zendesk.com



Continue the Conversation!

Minnesota Adult Education Network

Vibrant online community for adult educators:

- ❖ Post and have threaded conversations
- ❖ Direct message and Chat
- ❖ Topics to search and organize activity
- ❖ Participate in Groups organized around various content areas

Current Groups

- ❖ Administrators/Managers
- ❖ Adult Career Pathways
- ❖ Corrections
- ❖ Distance/Blended Learning
- ❖ ELA - Language Arts
- ❖ ESL Instruction
- ❖ Math & Numeracy
- ❖ One-Room Schoolhouse
- ❖ Science
- ❖ Support Staff

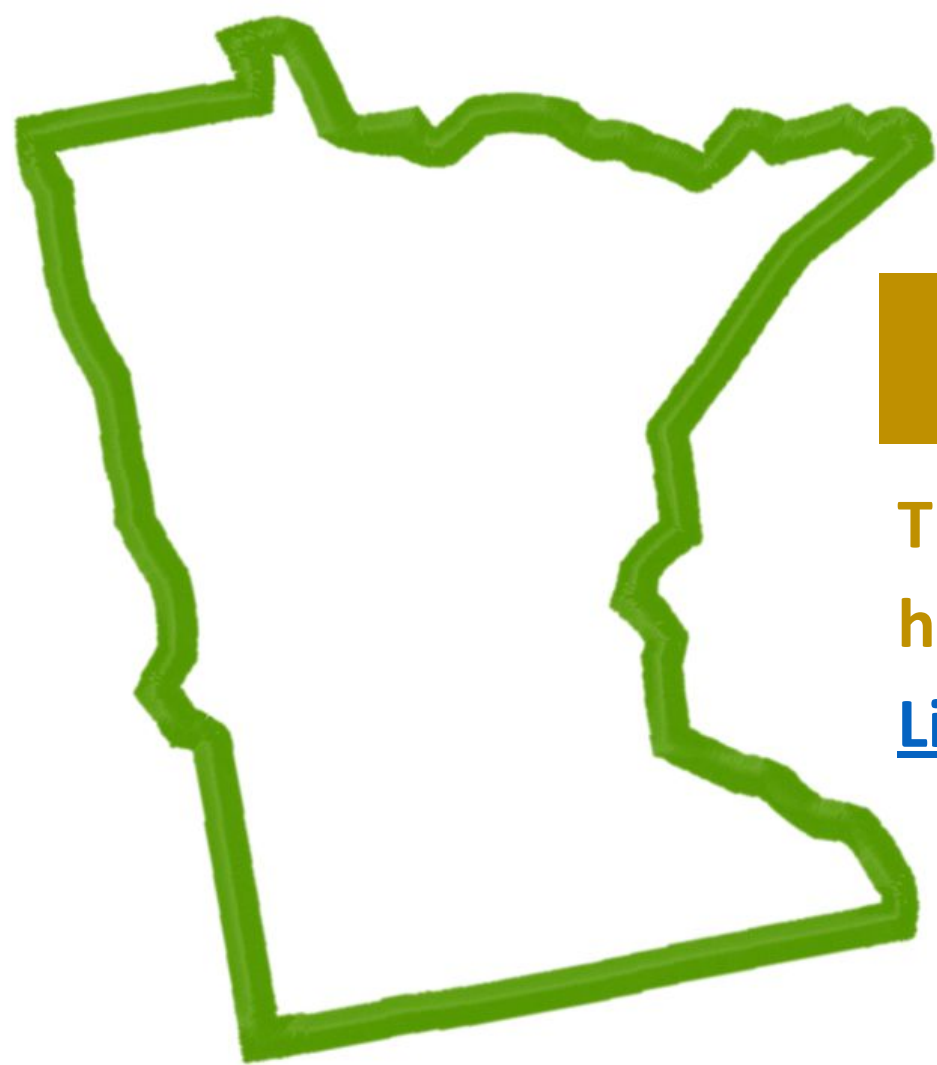
Learn more and join the MN Adult Education Network:

<https://atlasabe.org/news/online-networking-is-getting-mighty-easy/>





Questions?



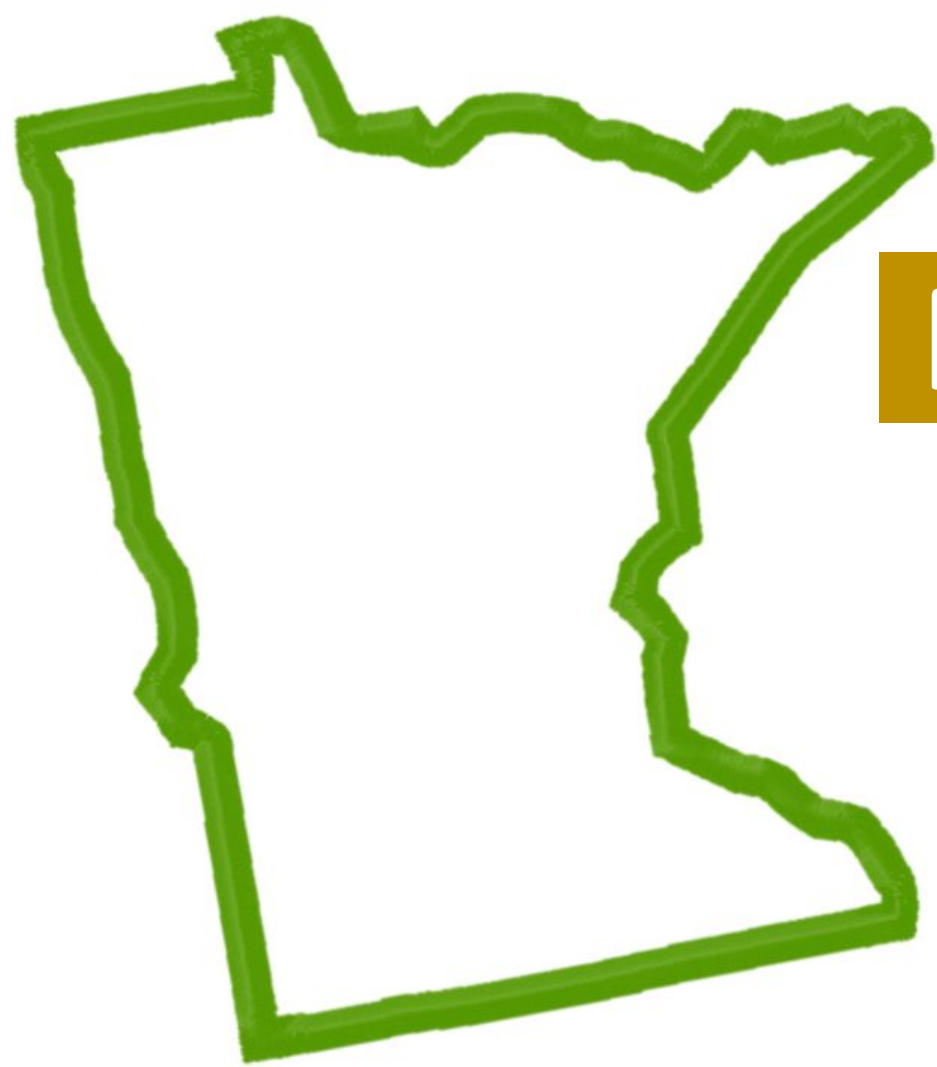
Materials

The recording, slides and handouts will be posted on the [Literacy Action Network website.](#)



Fall Manager Meeting (November 10, 2022)

Please share in the chat: What would you like to discuss at the Fall Manager Meeting?



Next WebChat

February 1, 2023

1-2:30pm

Coming Next: Strategic Approaches to Distance Learning

Please stay in this webinar to participate in the Distance Learning session, led by staff from Literacy Minnesota.

Take a short stretch break and we'll start at 2:35.





Thank You!

mde.abe@state.mn.us

Questions?

Neill Allard (*Neill.allard@state.mn.us*)

Julie Dincau (*Julie.dincau@state.mn.us*)

Brad Hasskamp (*Brad.hasskamp@state.mn.us*)

Astrid Liden (*Astrid.liden@state.mn.us*)

Brandy Logan (*Brandy.logan@state.mn.us*)

Jodi Versaw (*Jodi.versaw@state.mn.us*)