

Welcome to WebChat with Minnesota Adult Education!



- We'll begin at 1:00.
- Please stay muted to reduce background noise.
- If you are having any tech issues, please chat to Neill Allard for assistance.

Check-In Discussion (enter responses in the chat):

- **What are your priorities and/or goals as you are planning for programming in the upcoming year?**



Recording Today's Session

The recording will be posted on the Literacy Action Network website.



Welcome to WebChat with MNABE

Wednesday, July 20, 2022



Agenda

1. Welcome and Introductions
2. Grants and Funding
3. Accountability
4. High School Equivalency (HSE)
5. Transitions and Partners
6. Professional Development
7. Questions

A large stone monument with the word "Minnesota" in red script and "Welcome You" in black block letters. A blue banner is overlaid on the top right.

Adult Education Team @ MDE

Brad Hasskamp, State Director

Jodi Versaw, Program Quality

Julie Dincau, Transitions

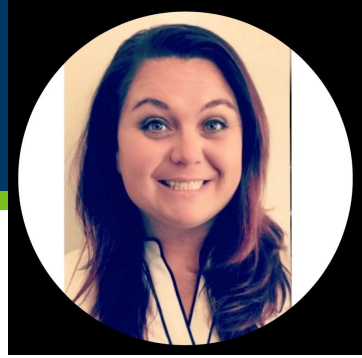
Astrid Liden, Professional Development

Brandy Logan, HSE & Accountability

Neill Allard, Records, Communications, and
Admin Support

New team member joining this year!

Welcome, Brandy Logan!



As the new **High School Equivalency and Adult Education Accountability Specialist**, Brandy:

- Serves as the state GED Administrator;
- Leads MDE's role in HiSET implementation in Minnesota;
- Serves as MDE's main representative on the High SEAs Advisory Group;
- Co-leads MDE's implementation of the Standard Adult High School Diploma;
- Co-leads MDE's adult education accountability and National Reporting System (NRS) efforts, including training, technical assistance, and reporting efforts; and
- Helps lead the Minnesota Adult Education (ABE) system with the rest of the team at MDE.

Contacting the Adult Education Team at MDE



Please email mde.abe@state.mn.us for:

- GED verifications and records requests;
- GED/HSE age waivers;
- GED Manager access;
- August submissions; and
- IET approval forms

Please email neill.allard@state.mn.us for:

- General questions for the adult education team when you do not know which one of us to contact

Grants and Funding

Integrated English Literacy and Civics Education Grants

Due to budgeting delays at the Minnesota Department of Education, these grants are still being processed.



Federal Adult Education Grant Competition



- 36 grant applications received
- 36 grantees are being approved
- Key Change/Challenge: Approving each provider in each consortium
- Next Step: applicants receive feedback from the workforce development boards
- Next federal grant competition: 2028 (unless WIOA is reauthorized requiring a competition earlier)

2021-22 Additional ABE Funding

- Consortia must spend all funding by August 31, 2022
- To request a financial reporting form (FRF), contact Nyagatare Valens (nyagatare.valens@state.mn.us)
- FRFs must be received by MDE by October 15, 2022 (ideally by September 15th if possible)



Annual Tech Fees Paid for 2022-23



- Normally, consortia receive invoices from Literacy Minnesota
- This fee covers each consortium's use of SiD and statewide distance learning (DL) licenses
- You will not receive an invoice this year
- MDE is paying all tech fees for 22-23 with unspent federal funding
- Consortia will still need to sign a contract with Literacy Minnesota this year
- This is a one-time situation; the plan is that consortia will be invoiced for the SiD and DL licenses again in 2023

State ABE aid amounts posted

Initial ABE state aid award amounts are now posted on MDE website. Consortium managers: please check to confirm that all data is correct!

(see email from Neill on July 8)

Adult Basic Education Entitlement Report

[Download](#) [PDF](#)

This report provides the annual Adult Basic aid calculation for each approved ABE consortium fiscal agent.

Year: Consortium:

ABE State Entitlement Calculation Report

2021-22 Consortium: Report Total

Calc Run Date: 07/15/2021
 Census appropriations: 9,738,114.98
 LEP appropriations: 3,272,568.42
 Total appropriations: 50,645,220.28
 Contact Hours appropriations: 34,361,968.45
 Census No Diploma appropriations: 3,272,568.42

Consortium	-----Census-----		-----Contact Hours-----		-----LEP-----		-Census No Diploma-		
	Count	Entitlement	Count	Entitlement	Count	Entitlement	Count	Entitlement	
All	Report Total	5,585,445	9,738,114.98	4,485,611.65	34,361,968.45	69,774	3,272,568.42	380,644	3,272,568.42
Total Entitlement Before CAP:		50,645,220.28		Consortium Entitlement:		50,196,487.85		Gross Entitlement: 50,196,487.85	
Total Consortium Contact Hours:		4,485,611.65						Net Entitlement: 50,196,487.85	

Link to State ABE aid amounts

Link to ABE Entitlement Report on MDE website:
<https://public.education.mn.gov/MDEAnalytics/DataTopic.jsp?TOPICID=407>

[Download](#) [PDF](#)

Adult Basic Education Entitlement Report

This report provides the annual Adult Basic aid calculation for each approved ABE consortium fiscal agent.

Year: Consortium:

ABE State Entitlement Calculation Report

2021-22 Consortium: Report Total

Calc Run Date: **07/15/2021**
Census appropriations: **9,738,114.98**
LEP appropriations: **3,272,568.42**
Total appropriations: **50,645,220.28**
Contact Hours appropriations: **34,361,968.45**
Census No Diploma appropriations: **3,272,568.42**

Consortium	-----Census-----		-----Contact Hours-----		-----LEP-----		-Census No Diploma-		
	Count	Entitlement	Count	Entitlement	Count	Entitlement	Count	Entitlement	
All	Report Total	5,585,445	9,738,114.98	4,485,611.65	34,361,968.45	69,774	3,272,568.42	380,644	3,272,568.42

Total Entitlement Before CAP: **50,645,220.28** Consortium Entitlement: **50,196,487.85** Gross Entitlement: **50,196,487.85**
Total Consortium Contact Hours: **4,485,611.65** Net Entitlement: **50,196,487.85**

State ABE Aid verification process

- Fiscal agent representative for each consortium must verify data in initial calculation; any errors should be reported to Jodi right away (jodi.versaw@state.mn.us)
- If any errors are reported, a new calculation may be run. This may affect award amounts for some or all consortia, but in the past the effects have always been minimal
- Award letters, including final amounts of state and federal aid, will be distributed in August

Notes about 2022-2023 State ABE Aid

- Hours from March 2019 - March 2020 were used again
- Total amount of aid for statewide system remained level with last year
- Statewide population increase resulted in a slightly higher proportion of the total funding going into base population aid (\$1.73 per resident)
- This resulted in slightly lower contact hour rate than last year: \$7.78
- Many consortia still hitting the contact hour revenue growth cap
 - Growth caps amount were kept to the same amount as last year, since same hours were used

Contact hours for 23-24 funding

IMPORTANT NOTE:

- Hours from March 2019 - March 2020 will not be used in the funding formula again.
- The most likely scenario for 23-24 funding is that actual hours from May 1, 2022 - April 30, 2023 will be used.
- While the overall total amount of state funding available will likely remain steady, the shift back to actual hours could result in more variation for individual consortia/grantees.
- Our MDE team will partner with Literacy Action Network to keep everyone as informed and prepared as possible.

Reminder: Carryover unused state ABE funds

Now is the time to use any remaining FY22 State ABE Funding!

Up to 20% of state funds can be spent between July 1 and September 30 of the following fiscal year (“Quarter 5”).

When carrying over funds in this way, be sure they are course coded correctly. The course code for FY22 funds is 002.



UFARS course codes for carryover

Course codes to use for carryover

FY22 = 002

FY23 = 003

FY24 = 004

etc.



5-year narratives due June 1, 2023

2023 5-year narrative cohort:

- American Indian OIC
- Central MN - St. Cloud
- Department of Corrections
- Great Rivers - South Washington County
- Rosemount/Apple Valley/Eagan
- Southeast ABE - Owatonna

Narrative Writers Workshop: November 2, 2022



Accountability

Updated Minnesota Adult Education (ABE) Policies

Minnesota Adult Basic Education

- Home
- About ABE in MN
- ABE delivery system
- ABE instruction
- ABE content standards
- Career pathways
- Distance learning
- Professional development

Revised policies now posted on MNABE web site:

- 2022-23 Assessment Policy
- Distance Learning Policy

MNABE Policy page:

<http://www.mnabe.org/abe-law-policy/mn-abe-policies>

August Submission/Reporting

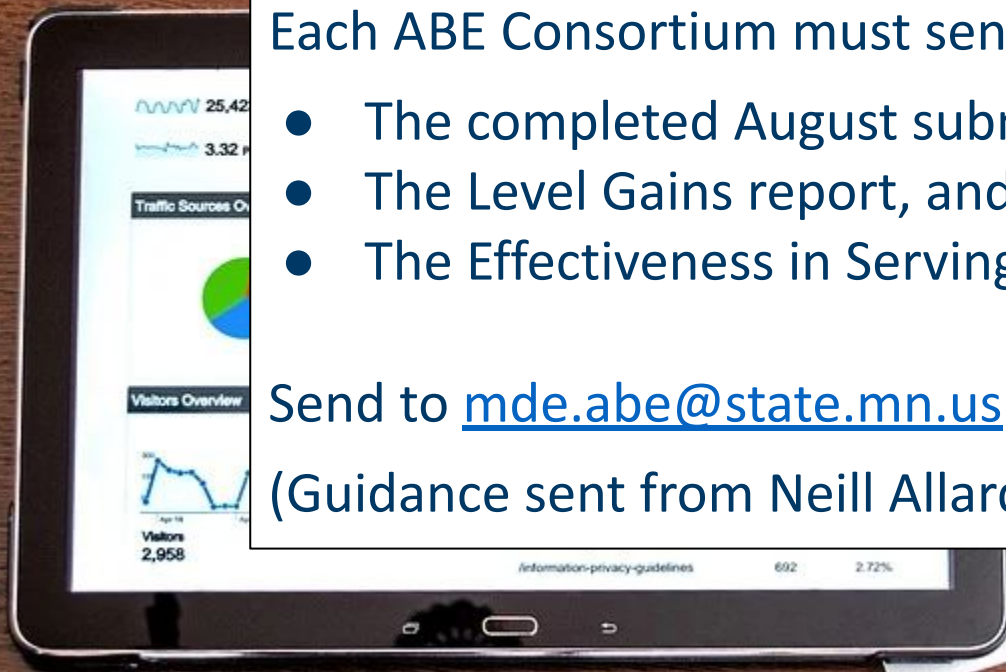
Due: Monday, August 1, 2022

Each ABE Consortium must send:

- The completed August submission/reporting document,
- The Level Gains report, and
- The Effectiveness in Serving Employers spreadsheet.

Send to mde.abe@state.mn.us

(Guidance sent from Neill Allard on June 7th)



August Submission/Reporting Components

1. **Level Gains with Post-Test Report for All ABE Participants** (download from SiD and attach in Microsoft Excel format) for your entire ABE consortium for July 1, 2021-June 30, 2022
2. **Annual Volunteer Information Report** (online form)
3. **Effectiveness in Serving Employers for 2021-22** (attach in Microsoft Excel format)
4. **Estimate of IET Workforce Training Costs** using ABE or IELCE funding (July 2021-June 2022)
5. **Consortium one-stop contributions** (CareerForce center and system)
6. **Verification of your consortium's state ABE aid calculation for FY23**

A close-up photograph of a dartboard with several darts. The darts are positioned in a way that they all appear to be aiming towards the center bullseye. The lighting is dramatic, with a strong blue tint and highlights on the metal barrels of the darts and the white board.

Statewide Targets

Targets are annual performance goals set by OCTAE (Federal Dept of Education) for our statewide adult education system (negotiated once every two years)

Targets have changed significantly because of COVID-related changes to programming

Minnesota Adult Education Targets

WIOA Indicator	Target for 2022-23	Target for 2023-24
Measurable Skill Gain (MSG)	27.5%	28%
Employment Rate 6 months after exiting ABE	34.3%	35%
Employment Rate 1 year after exiting ABE	35.4%	36%
Median Quarterly Earnings	\$6,190	\$6,200
Credential Attainment Rate	19.3%	20%



22-23 and 23-24 MSG Targets

MSG: Measurable Skill Gains

July 1, 2022-June 30, 2023: 27.5%

July 1, 2022-June 30, 2023: 28%

(down from 44% in 2021-22)

Program Improvement



Program Improvement is a technical assistance process that helps ensure our statewide ABE system reaches federal MSG targets

Program Improvement Process

Consortia that have low performance on accountability measures, such as MSGs, may be required to participate in Program Improvement, including:

- Program Improvement workshop
- Program Improvement planning
- Technical assistance from MDE



2022 ABE Report Card

In fall 2022, the ABE Report Card for 2022 will be released

2021 Report Card



Minnesota ABE PY 2021 Measurable Skill Gains (Level Gains and High School Credentials)					
ABE-Level Participants (12+ hours)*					
Consortium	Number of Participants (ABE Levels)	Number of Participants Rank	Number of Participants who Made a Level Gain	Number of Participants who Completed a High School Credential **	Percent of Participants with MSG ***
Tri-Co Corrections	110	25	51	11	52.7%
NRS Target					43.0%
Cass Lake Bena Walker	23	34	6	8	39.1%
Hiawatha Valley ABE	57	30	12	12	38.6%
Moorhead	113	24	26	20	37.2%
Rochester	452	7	116	32	32.1%
White Earth	23	34	0	7	30.4%
WEST ABE	335	9	90	12	29.0%
Lakes Area ABE	56	31	8	9	28.6%
Corrections	2226	1	456	166	25.8%
Farmington-Northfield	16	38	2	2	25.0%
Central MN ABE	189	16	18	31	24.3%

NO Program Improvement Process in 22-23

There will be NO Program Improvement Process in 22-23

NOTE:

The 2022 Report Card will give you a chance to see how your MSG and post-testing rates compare to other consortia and to federal targets.

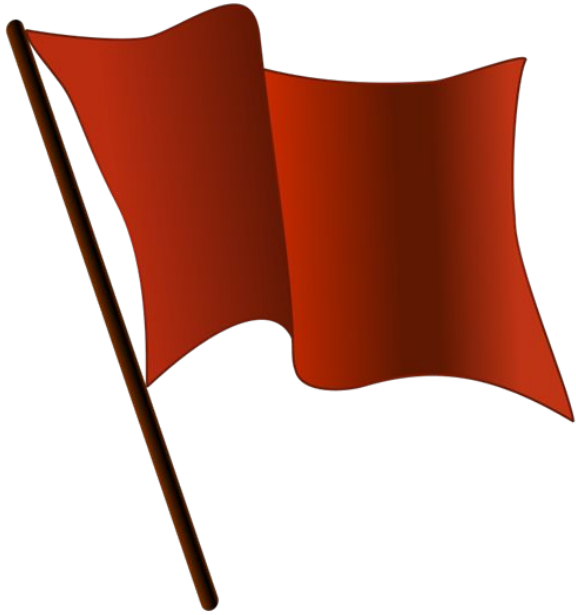
Minnesota ABE PY 2021 Measurable Skill Gains (Level Gains and High School Credentials)					
ABE-Level Participants (12+ hours)*					
Consortium	Number of Participants (ABE Levels)	Number of Participants Rank	Number of Participants who Made a Level Gain	Number of Participants who Completed a High School Credential **	Percent of Participants with MSG ***
Tri-Co Corrections	110	25	51	11	52.7%
NRS Target					43.0%
Cass Lake Bena Walker	23	34	6	8	39.1%
Hiawatha Valley ABE	57	30	12	12	38.6%
Moorhead	113	24	26	20	37.2%
Rochester	452	7	116	32	32.1%
White Earth	23	34	0	7	30.4%
WEST ABE	335	9	90	12	29.0%
Lakes Area ABE	56	31	8	9	28.6%
Corrections	2226	1	456	166	25.8%
Farmington-Northfield	16	38	2	2	25.0%
Central MN ABE	189	16	18	31	24.3%

Next Program Improvement Process: beginning FALL 2023

When the 2023 ABE Report Card is released in Summer/Fall 2023, some consortia may be flagged for participation in Program Improvement



Next Program Improvement Process: beginning FALL 2023



2023 ABE Report Card:

ABE consortia will be flagged for *possible participation* in Program Improvement if they fall below the Program Improvement Benchmarks:

Measurable Skill Gains – ABE students

Measurable Skill Gains – ESL students

Post-testing Rates

Program Improvement: NEXT STEPS

- Remember the next Program Improvement process is still more than a year away!
- Be watching for 2022 ABE Report Card and note how your results compare to other consortia.
- More information on upcoming WebChats - there may be changes before Fall 2023!



High School Equivalency (HSE)

Need to contact us?
Email mde.abe@state.mn.us



Record requests & verifications
Age waivers
GED Manager Access
Other questions

High School Equivalency (HSE)



Updated Records Request & Age Waiver forms are on MDE's website <https://education.mn.gov/MDE/dse/abe/>

Please check your program's website to update local links and documents

Make sure to communicate the update to staff. Anything that would have gone to Alice Smith, send to **mde.abe@state.mn.us**

High School Equivalency (HSE) Cont.....

Subsidy code
MNGED10 is now
reactivated!

Testers can get \$10
off the first time they
take each subject test
(maximum of \$40 off
for the whole battery
per tester)



HiSET Pilot

COMING SOON



Pilot in October and a full state roll out in January

Application Google Form due by Friday, July 29

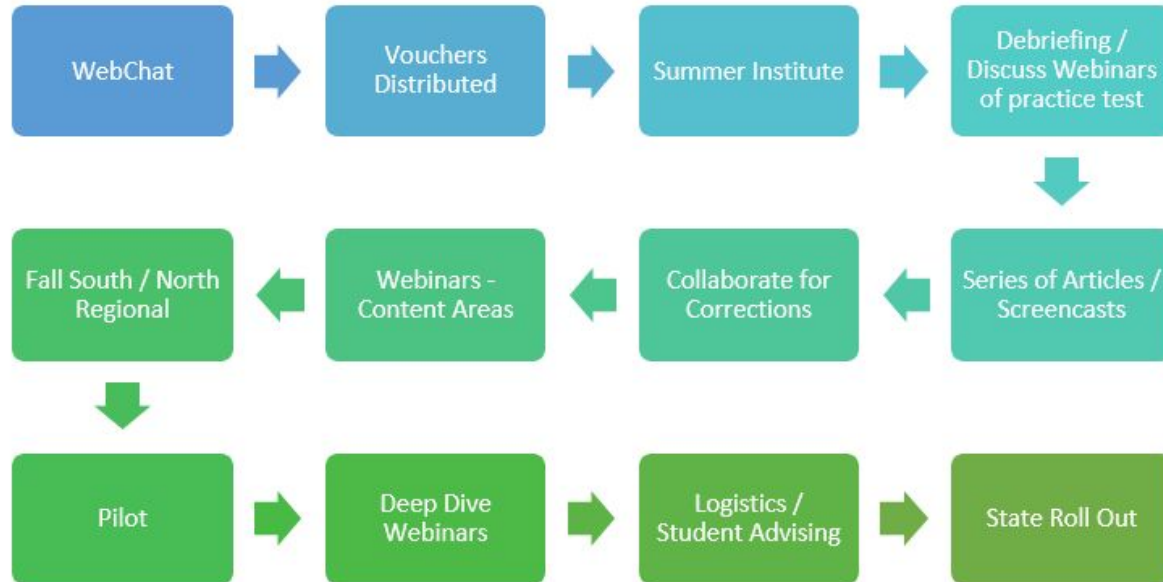
HiSET OPT Vouchers

HiSET Official
Practice Test (OPT)
Vouchers for ABE
staff

COMING SOON



HiSET Implementation



Literacy Action Network's (LAN) Marketing Toolkit

Kaija Bergen, LAN Membership and Marketing Committee Chair

LAN Marketing Toolkit

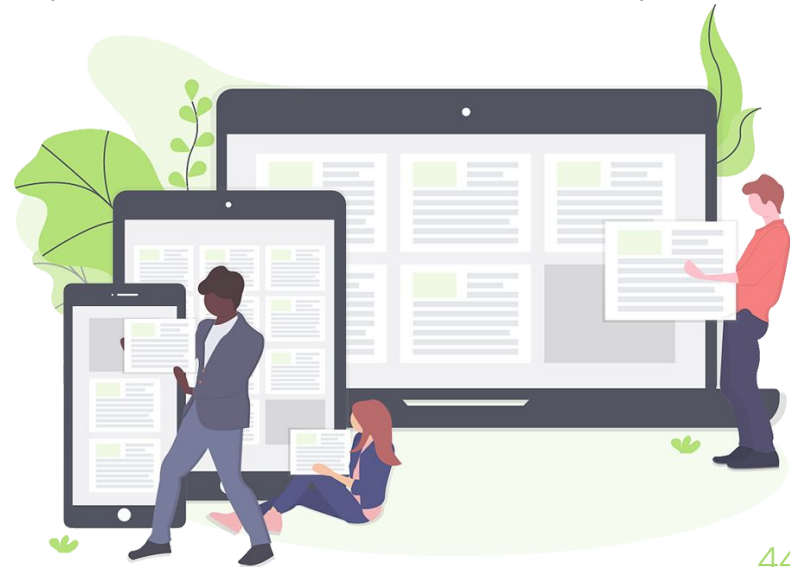
-Kaija Bergen

Chair of Marketing & Membership
for LAN



What is it?

- a 'toolkit' of resources that can be used by programs to inform and recruit learners, as well as to inform potential referral partners
- tools includes planning tools for outreach, outreach assessment tools, and a combination of templates for social media posts, flyers, and other materials on basic recruiting topics in various languages for ABE programs to use
- stock phrases & photos from ABE sites to be used for flyers, social media, and registration



Materials Overview

Outreach Planning Form – Sites for Fliers
Assess your community and develop a plan for outreach. See "Building Community Connections" for recommendations on connections an outreach site should have. Consider the following questions:

- Proximity** refers to the distance of the site from your program. Try to include all sites within a 5-mile radius.
- Site priority** evaluates how useful the location is for outreach (is the site used by a large number of people, popular, etc.).
- How often will you distribute fliers.
- Who is someone in your program tasked with outreach?

Digital Outreach Checklist
Evaluate your outreach program's online presence. Check off the items that are true for your site.

Website Evaluation
Evaluate if your website is participant-oriented. Depending on your community, you may want to control all of these elements. See "Affordable Website Options" and "Website Content Guidelines" for suggestions on website platform and ways to customize your website.

- website is specifically for adult education programs
- website uses accessible language and ways to customize your website
- class times and medium (online/in-person) are clearly outlined
- users can access registration (online/in-person)
- need to click multiple registration steps
- contact information is clearly listed
- users can register online
- information is available in multiple languages
- website URL is short and easy to remember
- program staff and current students are listed

How to Use PowerPoint Social Media Graphic Templates
General Program/Concordium Graphic
1) Open the "Social Media Graphic Template" PowerPoint.
2) Click on the "New Lesson" icon in the top of the page and select "General Lesson".

How to Use the Toolkit
We encourage you to take time to look through all the materials in the toolkit; however, if it is designed so that each program can choose to use the elements that will best serve your unique sites.

Let us know your goal for recruitment!
Are you recruiting for the whole program or one class?
Are there different tools that will better serve different projects?
Is there a population of people you hope to target?
How will you measure your recruitment?
How many do you have to put into recruitment?

Phrases for Flyers in Dari

Study with us!	با ما درس بخوانید
Classes at [SITE NAME]	موسسه رایگان انگلیسی در: [SITE NAME]
Free English Classes at [SITE NAME]	موسسه رایگان تدریس رایگان در: [SITE NAME]
Monday	دوشنبه

Phrases for Registration in Amharic

Registration	ጽዕን/ጽዕር
First Name	የመጀመሪያ ስም
Last Name(s)	የጸደቅ ስም(ዎች)
Address	አድራሻ
Telephone Number	ስልክ ቁጥር
Birth day	የዕድሜ ቀን
Where were you born?	የወለድበት ቦታ
email address	ኢሜይል አድራሻ

Phrases for Flyers in Karen

Study with us!	အတူတူအတူအတူအတူအတူအတူ
Free English Classes at [SITE NAME]	အခမဲ့အင်္ဂလိပ်ဘာသာရေးအခန်းကဏ္ဍ (SITE NAME)

Outreach Planning Form – Sites for Fliers

Assess your community and develop a plan for outreach. See "Building Community Connections" for recommendations on connecting with your communities.

- **Proximity** refers to the distance of the site from your program. Try to include all sites within the average distance a student travels to come to your classes.
- **Site priority** evaluates how useful the location is for outreach (is the site used by many people in the community, popular with people who are potential participants, etc.)
- **Frequency** determines how often you will distribute fliers.
- **Responsibility** targets someone in your program tasked with delivering the fliers/maintain the relationship with the site.

	Name	Name	Proximity	Contact	Site Priority	Frequency	Responsibility
<i>example</i>	Great Books Library	Temples					
Libraries		Elementary schools					
Coffee shops		Middle/Jr High schools					
Grocery stores/Bakeries		High schools					
Churches		Community colleges					
Mosques		Workforce centers					
		Additional locations <i>(ex: laundromats, restaurants, Parks & Rec centers, etc.)</i>					

Digital Outreach Checklist

Evaluate your consortia/program's online presence. Check all the boxes that are true for your site and total the boxes for your score.

Website Evaluation

Evaluate if your website is participant-oriented. Depending on your consortia, you may not be able to control all of these elements. See "Affordable Website Options" and "Website Content Ideas" for suggestions on website platforms and ways to customize your website.

- website is specifically for adult education programs
- website uses accessible language and limits the amount of text
- website outlines the classes offered
- class times and medium (online/in-person) are clearly stated
- users can access registration and class information with minimal website navigation (ex: no need to click multiple buttons, move between tabs, or scroll extensively)
- contact information provided
- users can register online
- information is available in multiple languages specific to the demographic of your potential participant base
- website URL is short and easy to type/share (ex: www.programname.org)

Total: _____ / 9

0-3 points:

3-6 points:

6+ points:

Facebook Evaluation

Evaluate your digital outreach through Facebook*

- page is specifically for adult education programs
- the "About" section includes a link to the program website
- in the "About" section includes registration information
- page is regularly updated (at least 1 post a week)
- posts generally include graphics
- page features original content specific to the program
- posts use accessible language and limit the amount of text

Total: _____ / 7

0-3 points:

3-6 points:

6+ points:

*Facebook is the most popular social media platform for outreach with ABE participants in general, if you know your potential participant population uses a different social media platform you can adapt these criteria to that medium

Templates for Flyers & Social Media

The image displays three flyer templates for English School classes, overlaid on a Microsoft Word interface. The templates are:

- Free Citizenship Class!**: Features a red banner with the title, an image of a passport and American flag, and text: "9:00 am - 10:30 am Mondays & Wednesdays Online", "Study for the citizenship interview!", "Register online or call Rodrigo at 612-222-2222", and "ENGLISH SCHOOL www.englishschool.com 612-222-2222".
- FREE In-Person Computer Class**: Features a green banner with the title, an image of a computer classroom, and text: "Learn how to use the internet and send emails!", "Mon & Wed 1:00 - 2:00 pm", "Register in-person: 1600 English Street Saint Paul, MN 55105", "English School www.englishschool.com 651-222-222", and "612-222-2222".
- Free English Classes!**: Features an orange banner with the title, and text: "In-Person Beginning English Monday & Wednesday 2:00 pm - 3:00 pm", "Online (Zoom) English Conversation Mondays 1:00 pm - 2:00 pm", "In-Person Intermediate English Tuesday & Thursday 4:00 pm - 5:00 pm", "Online (Zoom) Writing Class Mondays 2:00 pm - 3:00 pm", "Call to register or register online!", "ENGLISH SCHOOL www.englishschool.com 612-222-2222", and a circular logo for "ENGLISH SCHOOL COMMUNITY LITERACY CONVERSATION".

The background shows a Microsoft Word interface with the ribbon (File, Home, Insert, Design, Transitions, Animations, Slides) and various toolbars (Clipboard, Font, Drawing, Editing).

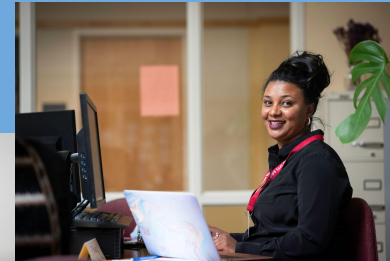
Canva

Stock Photos

Photo credit to Bruce Silcox Photography

Thank you also to the sites and students that participated in our project:

- Laura Temali's class at Hubbs Center for Lifelong Learning
- Linda Sandager & Deborah Therrien's classes at Lakeville Area Schools Community Education
- Julie Garner-Pringle & Banichayehu Aychiluhum's class at the International Institute of MN
- Mai Vue-Vang and Asma Abdille classes at ThinkSelf, Inc.



Transitions and Partners

Minnesota Future Together Grants

A new grant program offering tuition-free pathways for students in high-need career areas.

...for earning a certificate, diploma, associate's degree, or bachelor's degree at any public institution in the state.

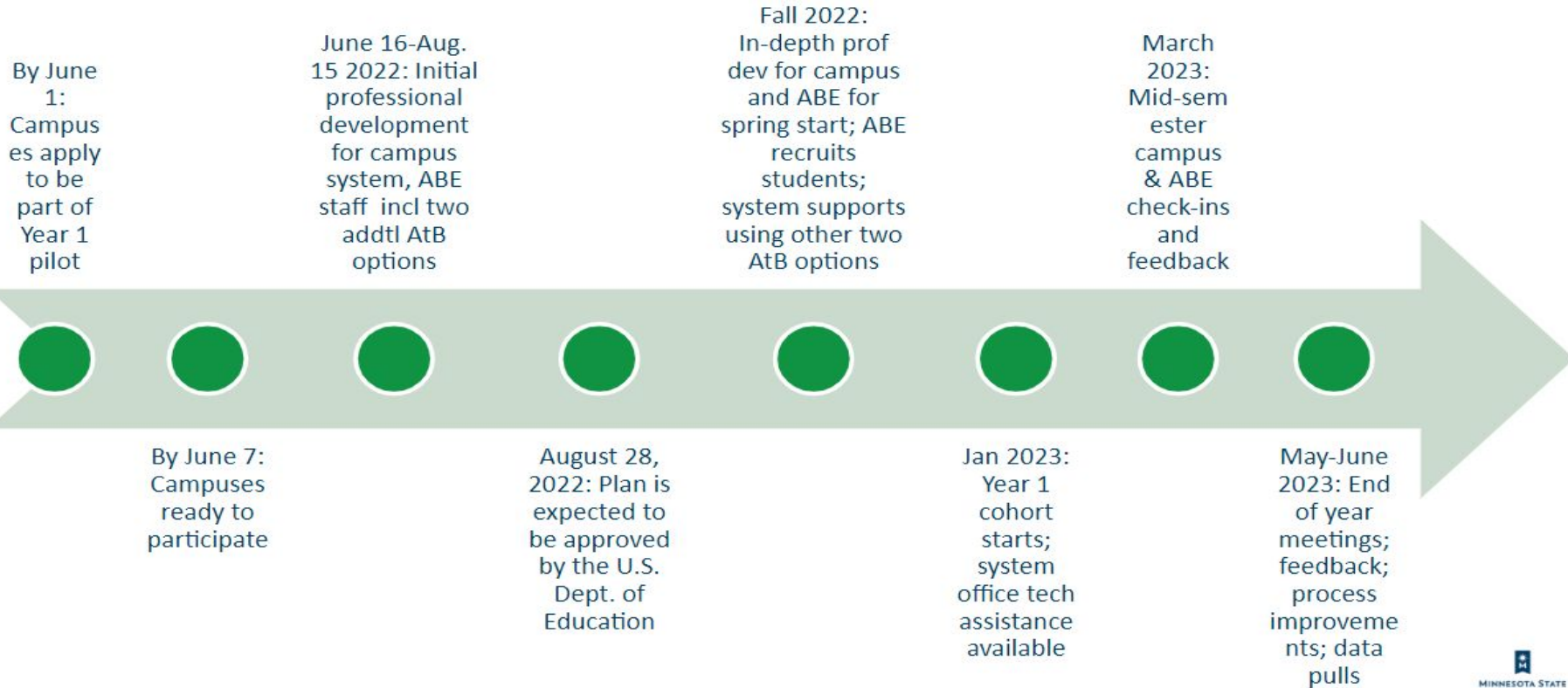


Photo by [Clay Banks](#) on [Unsplash](#)

Purpose of Ability to Benefit (AtB) State Plan pilot

- Provide more pathways into college for adults with no high school diploma/GED, who are disproportionately low-income and people of color
- Support Equity 2030 and the State Legislature's attainment goal
- Reduce barriers between secondary and post-secondary pathways by supporting strong collaboration between colleges and ABEs

Overall Timeline



Guided Self Placement for learners transitioning to college

- Guided Self Placement (GSP) guidance was created in May 2020 to address issues regarding how to assess learners for course placement during COVID.
- GSP may be used for students **without** standardized test scores or a high school GPA for placement at Minnesota State.
- College presidents expressed the desire to continue the assessment for course placement pandemic guidance due to concerns about inequities resulting from the use of standardized placement tests.
- The guidance will continue as a system wide pilot project through September 2023 so that more data can be gathered to evaluate effectiveness.

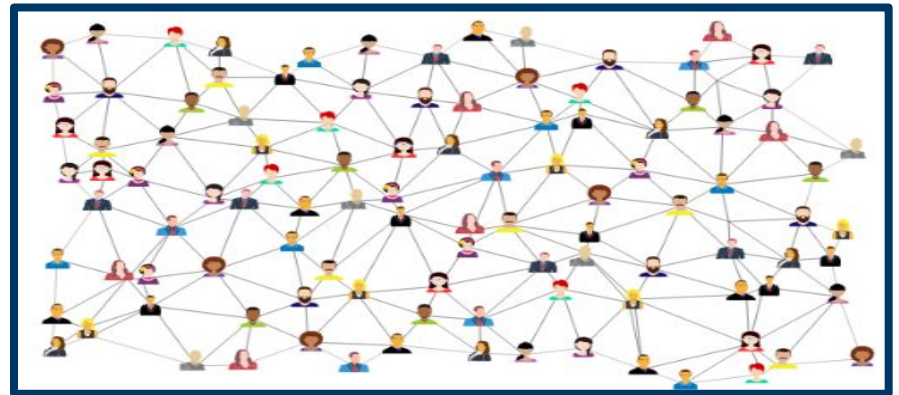
Online Statewide Training Courses Pilot

Classes will be open to all ABE learners who are at the appropriate level for the course.

The referring consortium will count the contact hours.

Courses that will be offered:

- Health Care Core
- Microsoft Office Specialist
- ParaPro
- TEAS



Three one-page briefs that highlight ABE services

Career Pathways

Rochester Hawthorne Education Center

**Integrated Education
and Training**

International Institute

Workplace Literacy

Great Rivers Adult Education

Memorandums of Understanding

Memorandums of Understanding (MOUs) are being developed at the local level with one-stop partners.

The Infrastructure Agreement (IFA) is part of the MOU.

Local Workforce Development Areas (LWDAs) are receiving training on creating the MOU.

There is an emphasis on ensuring all partners are included in the initial development of the MOU.

Adult Citizenship Education Program Webinar

Webinar Title: LINCS Universal TA Webinar - Adult Citizenship Education Program Development

The U.S. Citizenship and Immigration Services (USCIS) Office of Citizenship (OoC) will cover aspects of building a comprehensive adult citizenship education program. Attendees will leave with an understanding and resources to start or enhance an adult citizenship education program. Please note that this webinar will NOT be recorded.

Date and time: July 27, 2022 from 3 to 4:30 PM ET/ 12 to 1:30 PM PT

Link to register:

<https://air-org.zoom.us/j/96548045210?pwd=U3Z6cHFYR2hOT2lwVkVtL1BQYjg4dz09>

Professional Development and Resources

Join the 2022-23 *Racial Equity ABE and Partners Advisory Group*

The Racial Equity Team is looking for applicants for the second year of the **REAP Advisory Group**, which is part of the **Racial Equity in Adult Education Supplemental Services Grant**.

Purpose: By sharing expertise and collective wisdom, the Racial Equity ABE and Partners (REAP) Advisory Group will collaborate to support and inform all grant activities while cohesively working towards promoting equity within ABE.

Meetings: held virtually every 3rd Thursday of the month from 1:30 - 3pm

Apply here: [REAP Advisory Group application](#)

Deadline: Friday, July 22

If you have any questions or would like more information contact:

See Moua-Leske

See.Moua-Leske@marshall.k12.mn.us

or Addy Wolbaum

Addy.Wolbaum@ci.marshall.mn.us

Volunteer Training

MN Adult Education Volunteer Training Policy:

Volunteers who work with adult learners are required to receive either **Foundations of Adult Education Tutoring (12 hours)** or **Foundations of Volunteering in the Adult Education Classroom (4 hours)**, depending on their role. Learn more: <https://www.literacymn.org/volunteer-foundations-training>

***As of July 1, 2022, all training required per the Volunteer Training Standards Policy must be entered in SiD.**

Questions about entering volunteer training in SiD? sidsupport@literacymn.org

ABE Summer Institute

- August 18-19 (virtual)
- Submit your [poster session proposal](#) by July 29
- [Register](#) by August 12!



Teacher Verification Model (TVM)

Upcoming TVM Certification Webinar:

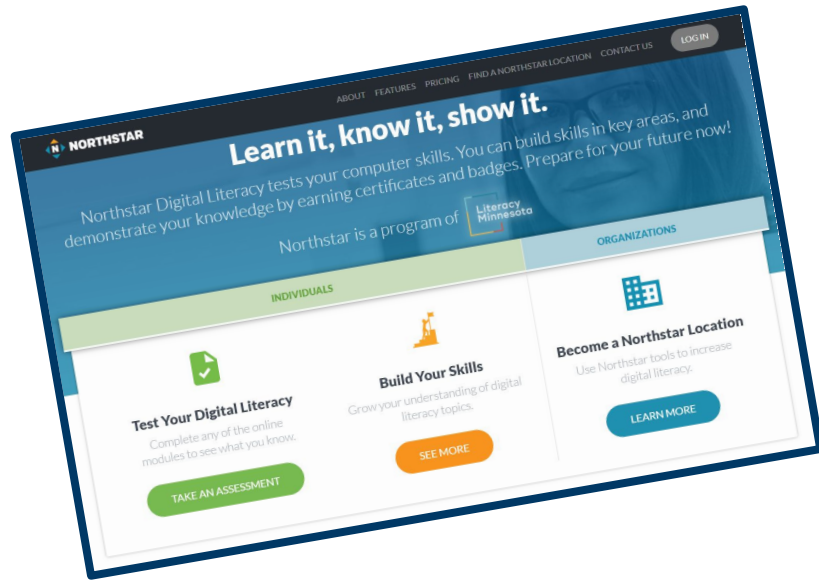
- August 16, 2:00-4:00

*TVM certification webinar registration info in the TVM module of the [Distance and Blended Learning Basics for Minnesota Adult Education](#) online course.

- **More info about TVM and the certification process:**
<https://www.literacymn.org/teacher-verification-model>
- **Questions about TVM or any other DL-related topic?**
support@mnabedistancelearning.zendesk.com



NEW! Northstar Digital Literacy Foundations Course



Learn about the **Northstar Digital Literacy Standards** and how to integrate them into your instruction.

A draft version of this self-paced course for MN adult education teachers is now available through [Literacy Minnesota's online training portal](#), with the official launch at Summer Institute.

ABE Foundations at a Distance

Help your new staff get off to a great start!

[Webinar series](#) to complement the
[ABE Foundations Online Course](#)

- October 18, 1:30-3:00
- October 25, 1:30-3:00
- November 1, 1:30-3:00



Topics include:

- Introduction to ABE Students
- MN Adult Secondary Credentials
- MN ABE Model & Delivery System
- MN ABE Policy & Accountability
- Introduction to MN Content Standards for ABE
- Volunteers
- Professional Development Resources

ACES TIF is getting a refresh!

This fall Stephanie Sommers (ATLAS ACES Coordinator) & an advisory team of MN adult education practitioners will be working to update and revise the Transitions Integration Framework (TIF) and related resources.

Mark your calendars for the **TIF 2.0 webinar series:**

- Feb. 28, 2:00-2:30
- March 21, 2:00-2:30
- April 18, 2:00-2:30



Fall/Winter PD Events

- **ABE Math Institute** - Sept. 24 (virtual)
- **Fall South Regional** - Sept. 30 (in-person, Mankato)
- **Fall North Regional** - Oct. 13-14 (in-person, Walker)
- **CTE Works Conference** - Nov. 1 (in person & virtual)
- **Fall Manager Meeting** - Nov. 10 (in-person)
- **Support Services Conference** - Nov. 17-18 (virtual)
- **Minnesota English Learner Education (MELEd) Conference** - Nov. 18-19,
St. Paul River Centre
- **Volunteer Management Conference** - Dec. 2 (virtual)
- **Language and Literacy Institute** - Jan. 26-27 (in-person, Bloomington)
- **Spring Virtual Conference** - Apr. 28 (virtual)



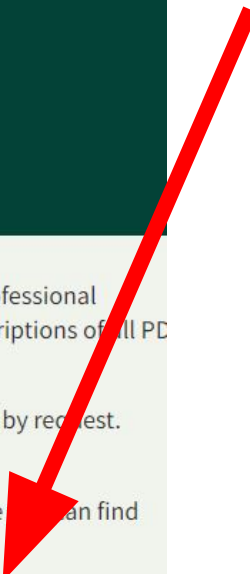
Professional Development Catalog

The online Minnesota Adult Education PD Catalog provides an overview of all MN Adult Ed professional development (PD) activities in one convenient, searchable place. Here you will find brief descriptions of all PD offerings currently provided by the **Minnesota Adult Education Support Network**.

Note: Not all activities listed here have been scheduled yet, and many can be provided to you by request. Others are available on an ongoing basis.

- Scheduled activities are linked to the MN Adult Ed **Events Calendar** or other sites, where you can find registration and more details.
- For an overview of upcoming PD activities for the year, see **FY23 MN Adult Ed PD Dates**.

A complete list of all [FY23 PD events](#) that have been scheduled to date is available on the [MN Adult Education PD Catalog](#).



Upcoming Statewide PD Survey

Help us support you and your staff!

Statewide professional development survey of all managers, instructors and support staff will be open from **September 13th-26th.**

Results will be used to inform PD and resources to support MN adult ed field.



Continue the Conversation!

Minnesota Adult Education Network

Vibrant online community for adult educators:

- ❖ Post and have threaded conversations
- ❖ Direct message and Chat
- ❖ Topics to search and organize activity
- ❖ Participate in Groups organized around various content areas

Current Groups

- ❖ Administrators/Managers
- ❖ Adult Career Pathways
- ❖ Corrections
- ❖ Math & Numeracy
- ❖ One-Room Schoolhouse

Learn more and join the MN Adult Education Network:

<https://atlasabe.org/news/online-networking-is-getting-mighty-easy/>



The background of the slide is a dense, colorful pattern of overlapping question marks. The colors range from bright yellows and oranges to deep blues and purples, creating a vibrant and abstract visual. The question marks are of various sizes and orientations, some appearing as solid shapes and others as semi-transparent overlays.

Questions?



Materials

The recording, slides and handouts will be posted on the [Literacy Action Network website.](#)



Next WebChat

September 22, 2022

1-2:30pm



Thank You!

mde.abe@state.mn.us

Questions?

Neill Allard (*Neill.allard@state.mn.us*)

Brandy Logan (*Brandy.logan@state.mn.us*)

Astrid Liden (*Astrid.liden@state.mn.us*)

Jodi Versaw (*Jodi.versaw@state.mn.us*)

Julie Dincau (*Julie.dincau@state.mn.us*)

Brad Hasskamp (*Brad.hasskamp@state.mn.us*)