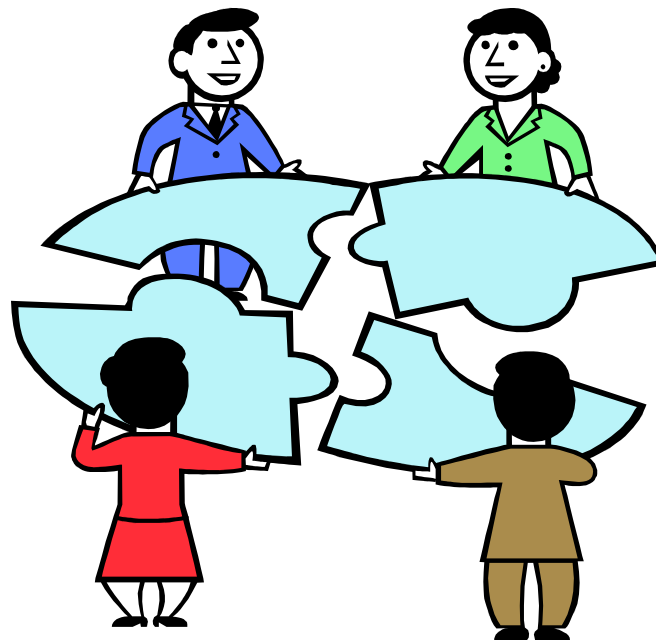


# PD in Action: Learning Circle

Dakota Prairie ABE's in-house  
Professional development





# Introduction

- Rosemary Sharkey
- Claudia Kinville

## Purpose:

1. To identify the merits of in-house professional development
2. To explain the process of our program's learning circle
3. To help you identify an issue/topic that may benefit from a learning circle PD format

# Who's Here?





## Why did our program need to address the multi-level issue?

- PD is not always accessible.
- Teachers work at other jobs and in other districts.
- Sharing didn't always happen well.
- Implementation of PD didn't always happen well.
- Follow-through was weak.
- Program Improvement became part of our reality!



# Organization

- 6 face-to-face 1-hour sessions
- All ESL teachers were expected to attend.
- Reflection questions were sent out before every session.
- Idea sharing took place at each session.
- A multi-level lesson - in writing – was shared with all teachers.

# Let's figure this out

- What might you need to improve on within your program?
- Why might this be a good way to address a program issue?





## What is your issue?

- How would you determine the need for a learning circle?
- How would you communicate this need?
- How would you build your team?
- How would you work out the details?

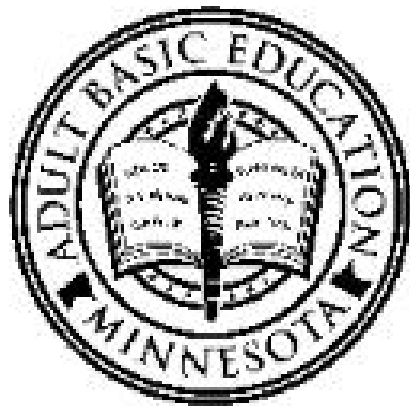
What do you think?





# Observable Outcomes

- For our students
- For our teachers
- For our program
- For our stakeholders



# Questions

